

Roll No.

Total No. of Pages : 05

Total No. of Questions : 04

B. Architecture (2012 & Onwards) (Sem.-2)

ARCHITECTURAL DRAWING – II

Subject Code : BACH-203

M.Code : 45091

Time : 04 Hrs.

Max. Marks : 50

INSTRUCTIONS TO CANDIDATES :

1. Attempt any ONE question from Unit-I and attempt any ONE question from Unit-II.
2. Attempt TWO questions in total.
3. The location of picture plane, station point, and horizon level is to be decided by the students themselves.
4. Assume any missing data and mention the same.
5. Do not erase the construction lines.
6. Credit will be given for neat drafting.
7. The figures attached are not to scale.
8. All the dimensions given are in millimeters.

UNIT-I

1. Draw an axonometric view of the object whose plan and elevation are given in Figure-1. (25)
2. Draw an isometric view of the object whose plan and elevation are given in Figure-2. (25)

UNIT-II

3. Draw a TWO point perspective view by plan method of the object whose plan and elevation are given in Figure-3. (25)
4. Draw a ONE point perspective view by plan method of the object whose plan and elevation are given in Figure-4. (25)

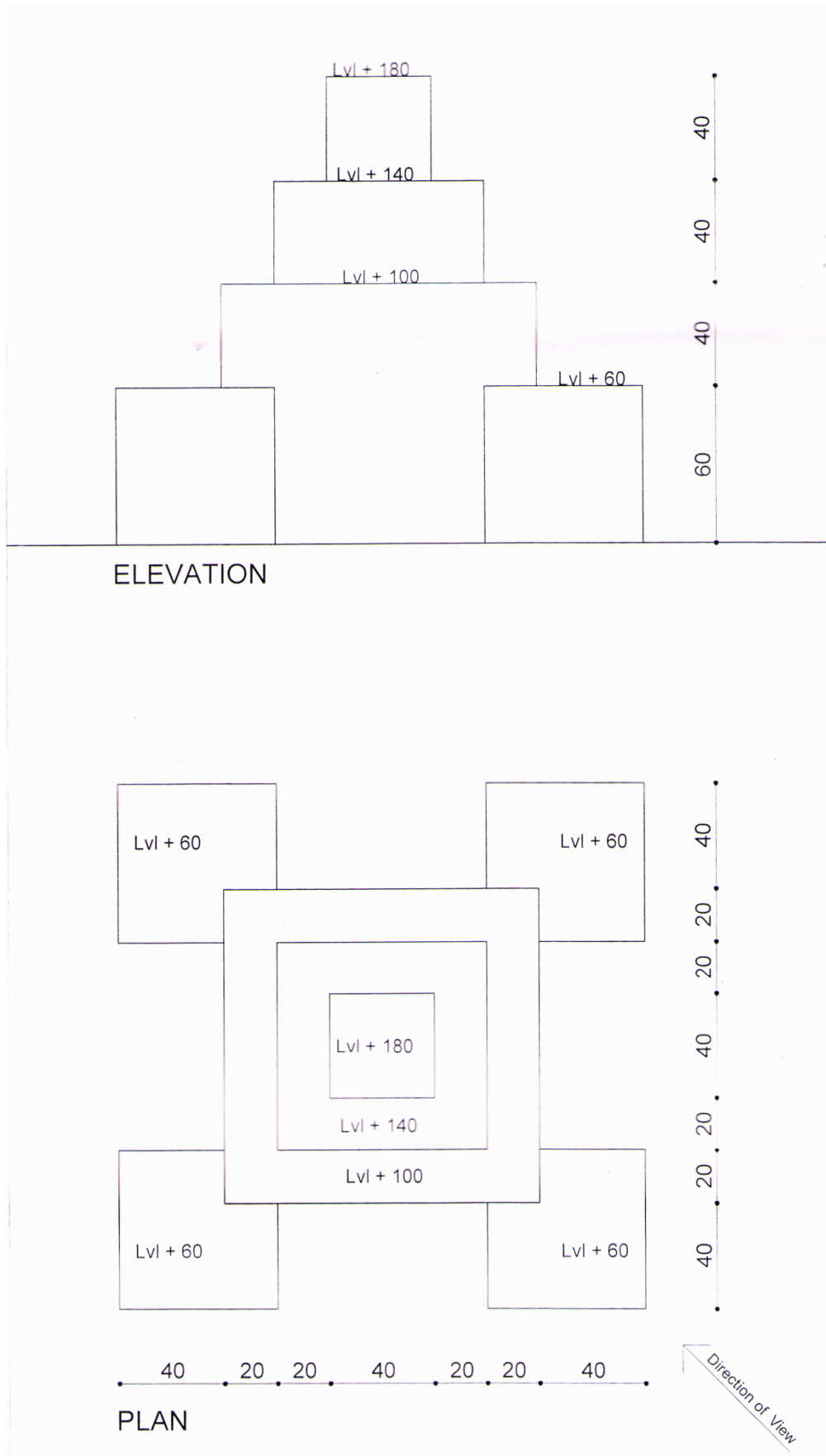
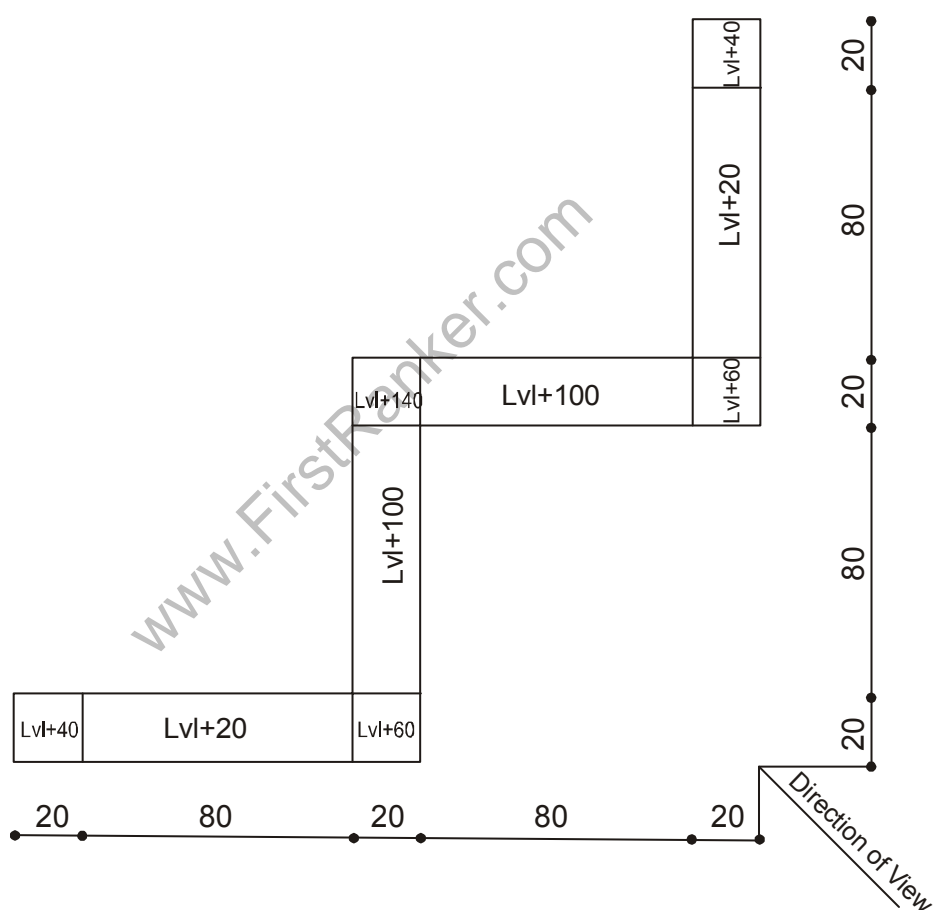
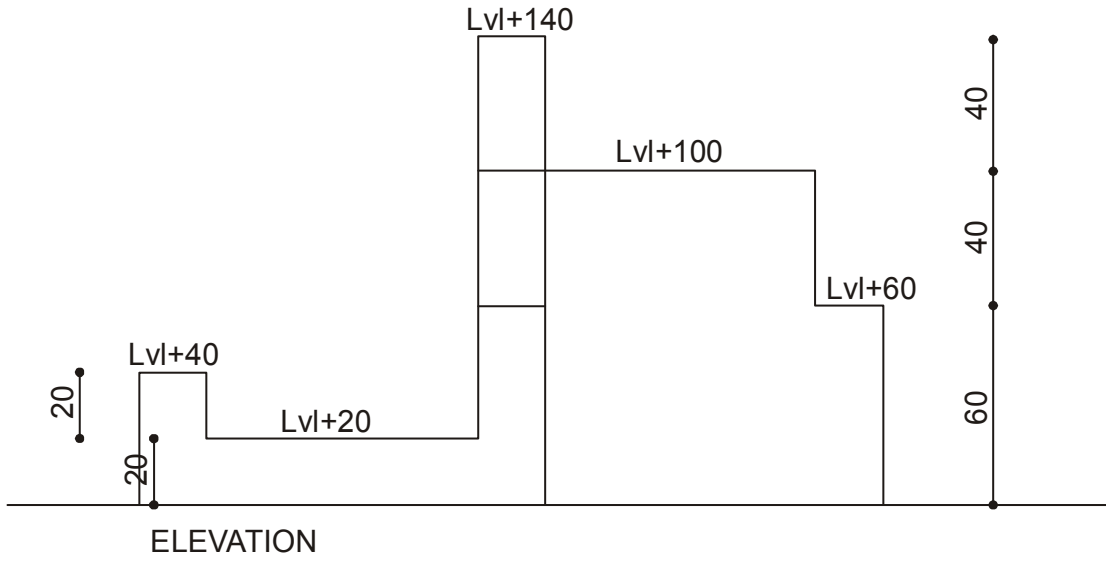


FIG 1



Note: All dimensions are in mm.
Not to scale. Choose appropriate scale

FIG. - 2

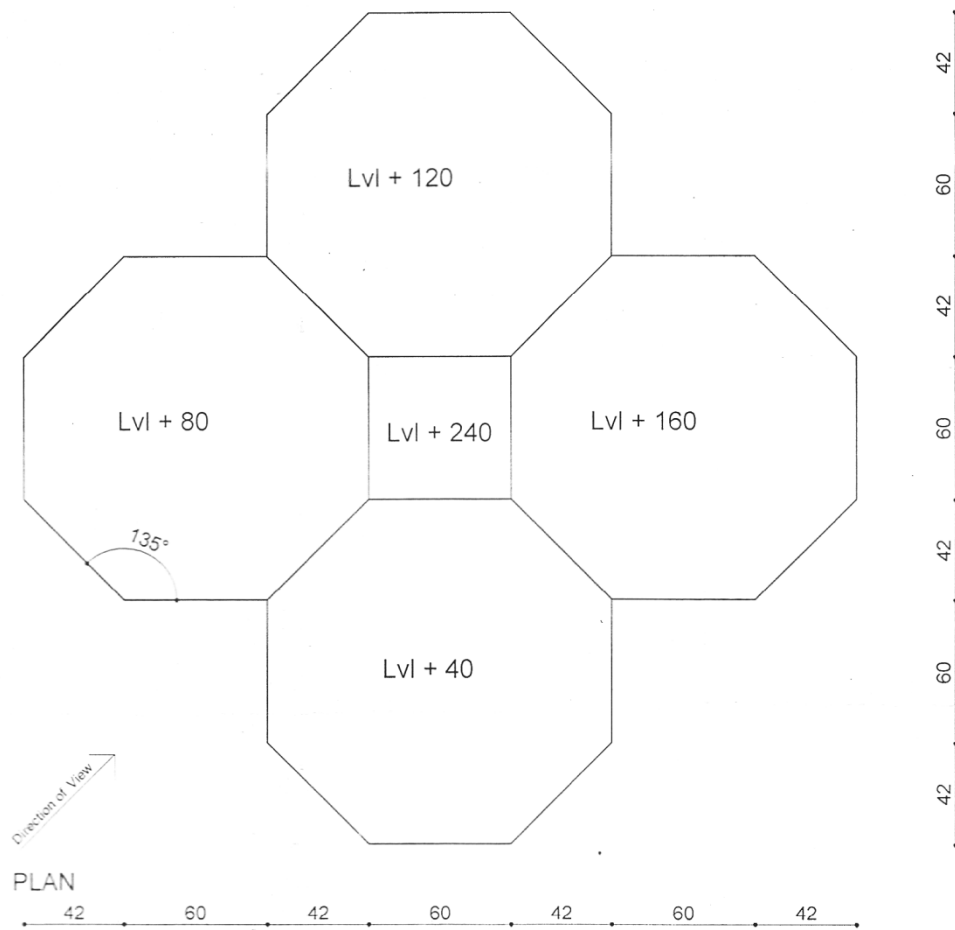
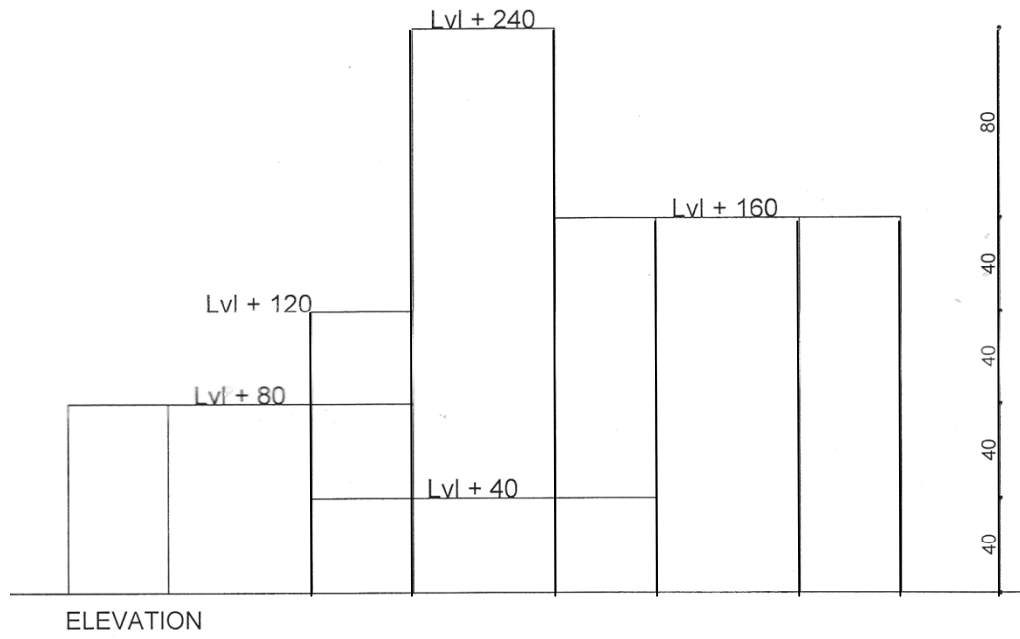


FIG. - 3

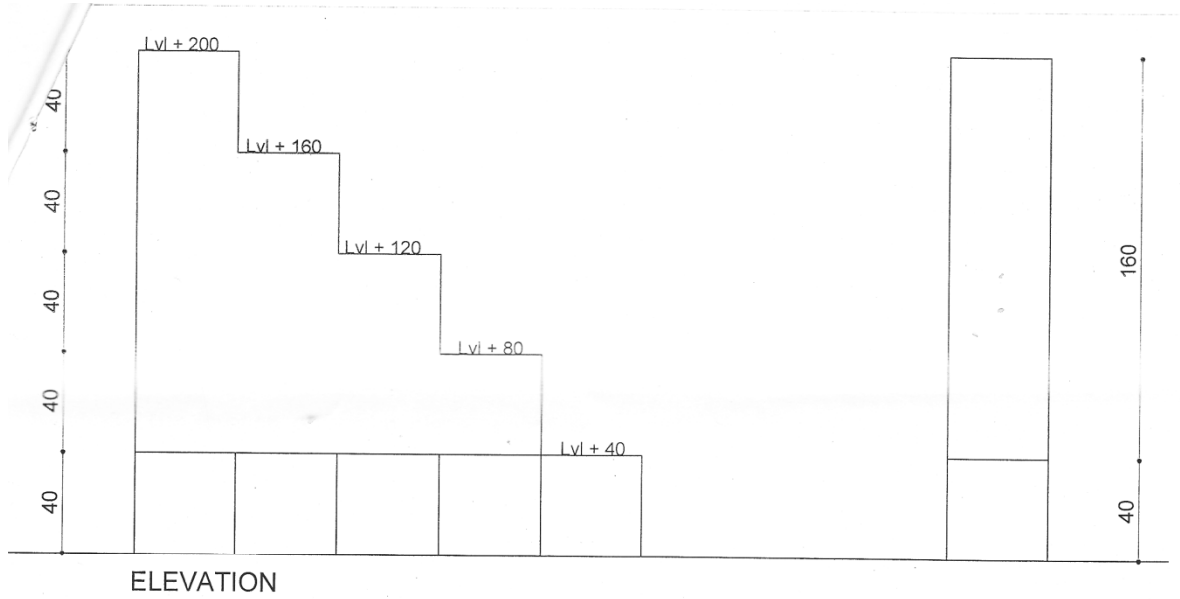


FIG. - 4

NOTE : Disclosure of Identity by writing Mobile No. or Making of passing request on any page of Answer Sheet will lead to UMC against the Student.