

Roll No. 

--	--	--	--	--	--	--	--	--	--

Total No. of Pages : 04

Total No. of Questions : 04

**B. Arch. (2012 & Onwards) (Sem.-3)****ARCHITECTURAL DRAWING-III**

Subject Code : BACH-303

M.Code : 70415

Time : 04 Hrs.

Max. Marks : 50

**INSTRUCTIONS TO CANDIDATES :**

1. Attempt TWO question selecting ONE question from EACH UNIT.
2. All questions carry equal marks.
3. Due weightage shall be given to neatness and drafting.

**UNIT-I**

1. Draw the plan and elevation as shown in figure 1 and cast the sciography.
2. Draw the plan and elevation as shown in figure 2, develop the axonometric view and cast the sciography in plan, elevation as also in the axonometric view.

**UNIT-II**

3. Draw the two-point perspective of the object whose plan and elevation are shown in figure 3. Consider eye level at 250 mm above ground level.
4. Draw the one-point perspective of the object whose plan and elevation are shown in figure 4.

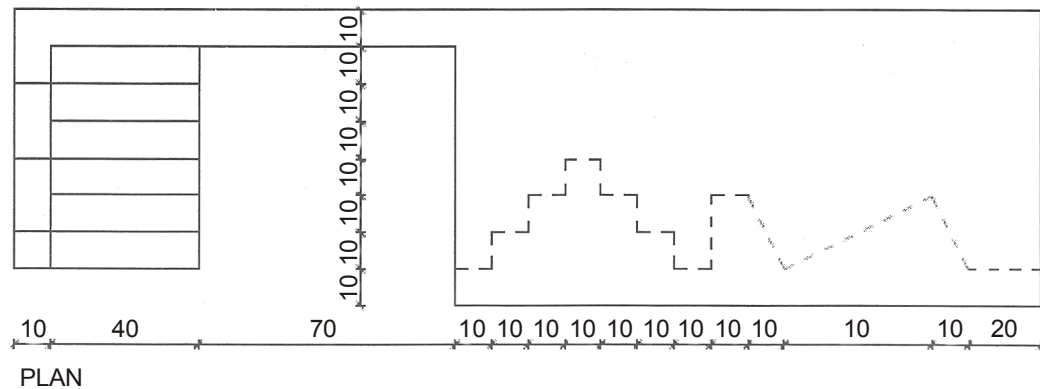


FIGURE 1

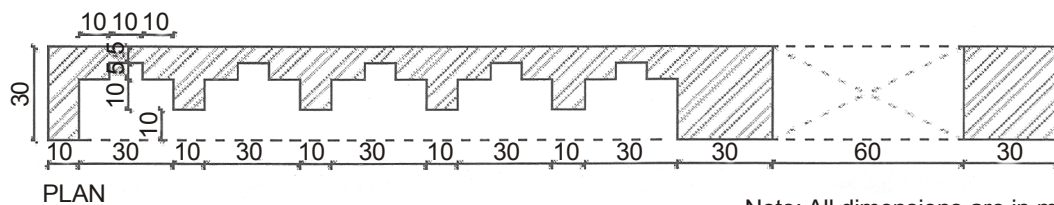
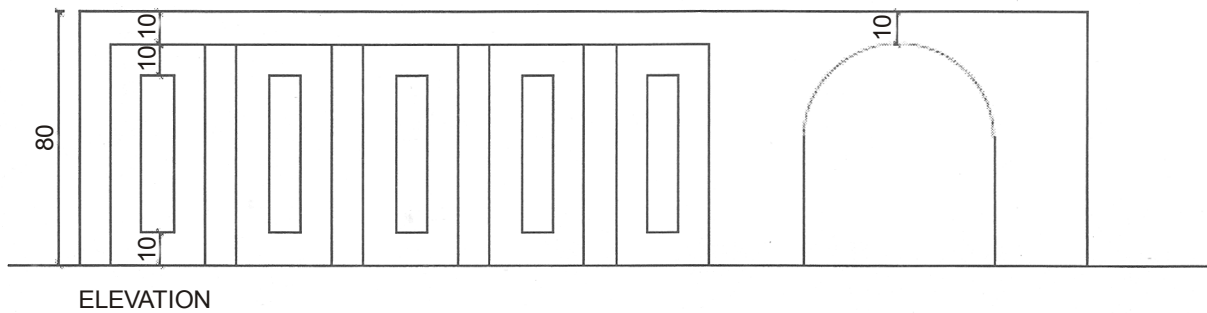
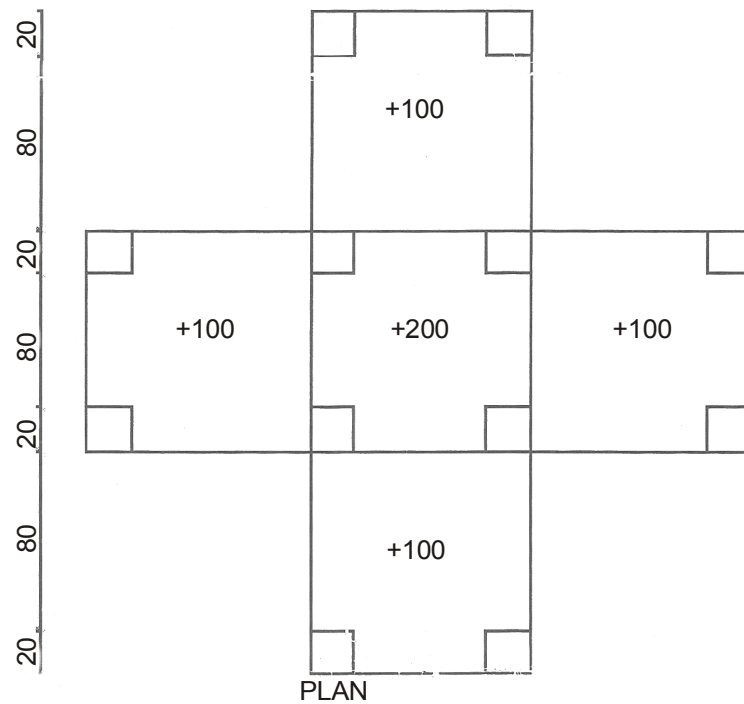
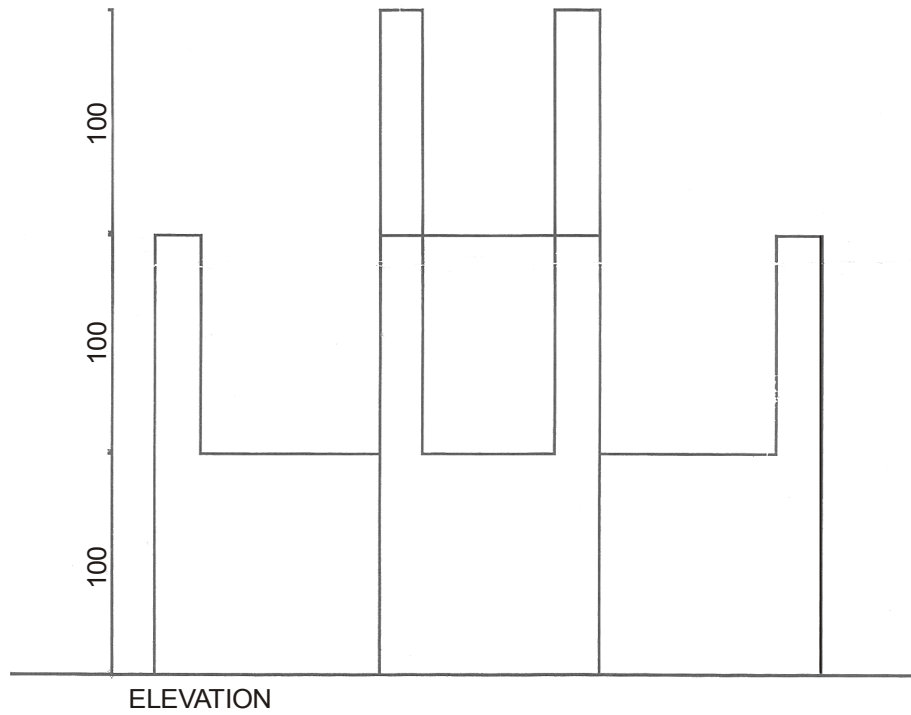
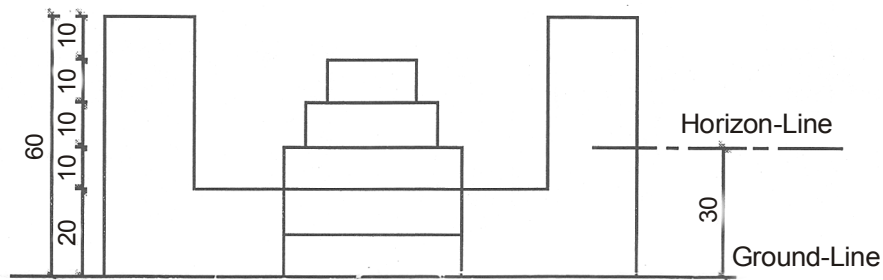


FIGURE 2

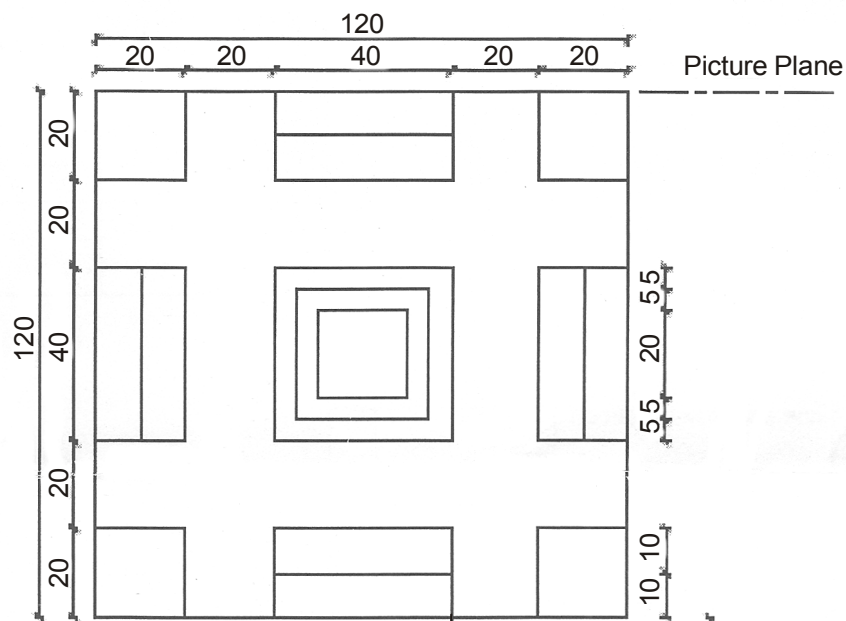


Note: All dimensions are in mm.  
Not to scale. Choose appropriate scale.

FIGURE 3



ELEVATION



PLAN

Note : All dimensions are in mm.  
Not to scale. Choose appropriate scale

Station Point

Figure 4

**NOTE : Disclosure of Identity by writing Mobile No. or Making of passing request on any page of Answer Sheet will lead to UMC against the Student.**