

Total No. of Pages : 02

Total No. of Questions : 05

B.Arch. (Sem.-8)
BUILDING CONSTRUCTION-VII

Subject Code : AR-424

M.Code : 45054

Time : 4 Hrs.

Max. Marks: 100

INSTRUCTION TO CANDIDATES :

1. QUESTION No. 1 is COMPULSORY and carries 40 Marks.
2. Attempt any TWO more questions from the REST which have equal weightage.

Q1. Draw the working details of the following :

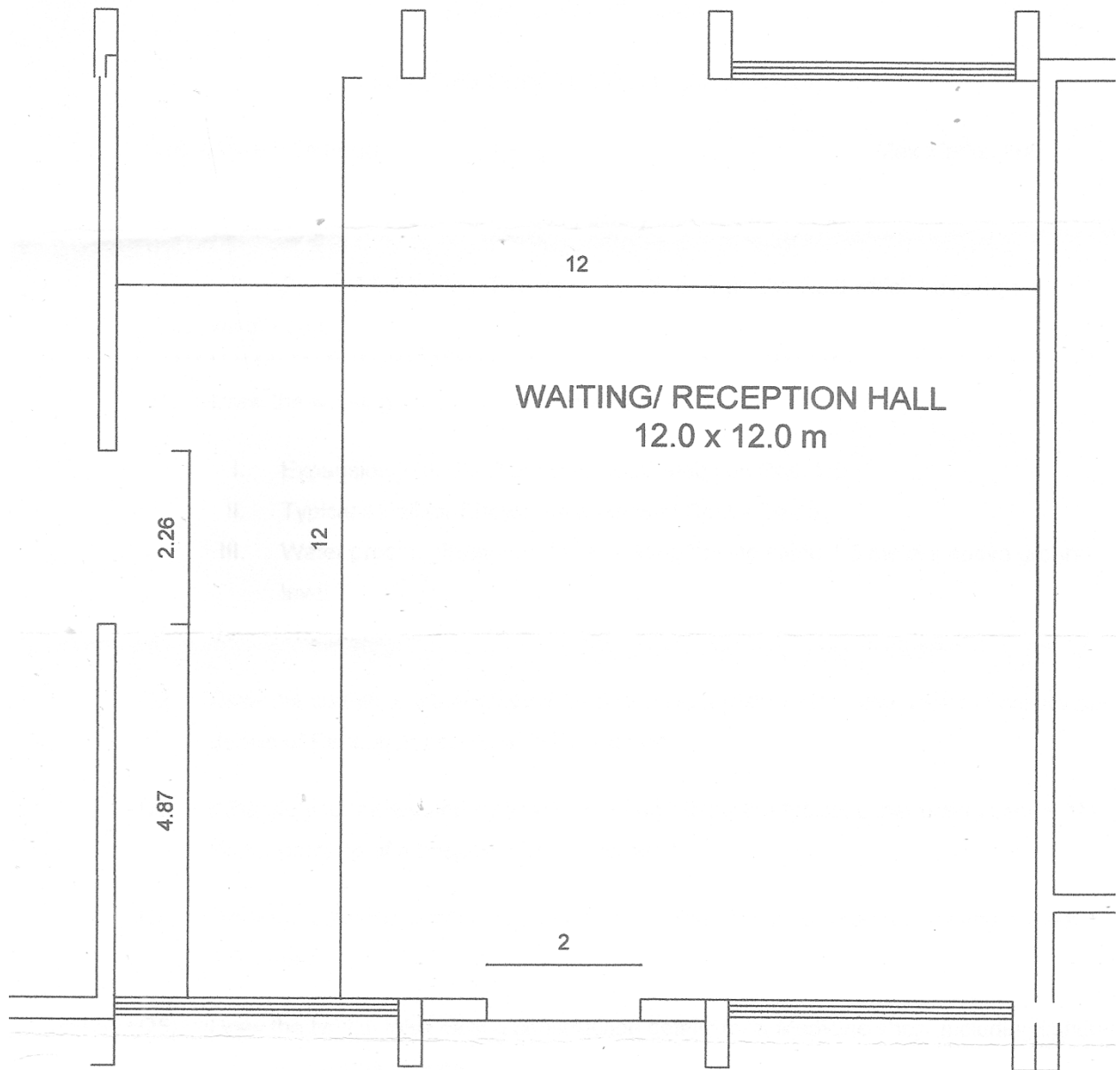
- Expansion joint detail between RCC slabs on Roof top.
- Typical detail for Showcase window of Books Shop.
- Water proofing treatment for a building having plinth 1.5 meters above ground level
- Thermal insulation for RCC roof

Q2. Draw the complete interior layout for a Hotel reception lobby. Also draw the construction details of Reception counters. (Plan enclosed)

Q3. What do you understand by Water Proofing? Draw the typical construction details of Water proofing of a basement retaining wall.

Q4. Draw the construction details for shop front of an Antiques sale shop having a width of 4.5 meters.

Q5. Draw the typical false ceiling construction details for a Medicine shop including lighting along with display counters.



HOTEL WAITING/ RECEPTION

NOTE : Disclosure of Identity by writing Mobile No. or Making of passing request on any page of Answer Sheet will lead to UMC against the Student.