

Roll No.

--	--	--	--	--	--	--	--	--	--	--	--	--	--	--	--	--	--	--	--	--

Total No. of Pages : 03

Total No. of Questions : 15

B.Tech. (AE) (2018 Batch) (Sem.-3)

MACHINE DRAWING

Subject Code : BTAE-304-18

M.Code : 76402

Time : 3 Hrs.

Max. Marks : 60

INSTRUCTIONS TO CANDIDATES :

1. SECTION-A is COMPULSORY consisting of TEN questions carrying TWO marks each.
2. SECTION-B contains THREE questions carrying FIVE marks each and students have to attempt any TWO questions.
3. SECTION-C contains TWO questions carrying THIRTY marks each and students have to attempt any ONE questions.
4. Assume any missing data suitably.

SECTION-A**Write briefly :**

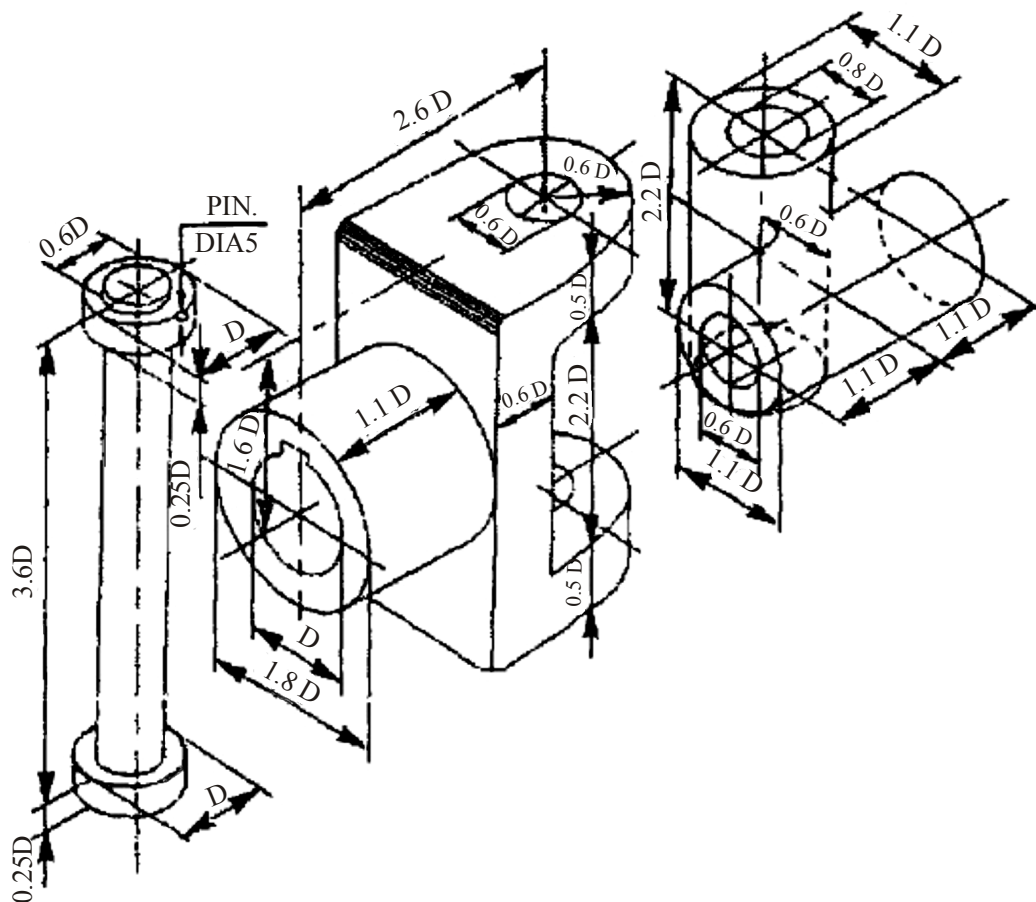
1. What is 'Chamfering'?
2. Draw the symbol for single butt weld.
3. Provide classification for various types of fits.
4. Explain the importance of sectional views.
5. What are the applications of temporary fastenings?
6. What are multi start threads?
7. What is the function of a Key?
8. Explain the method of correct dimensioning of a circle and arc.
9. What is stud?
10. How the allowance and tolerances are different to each other?

SECTION-B

11. Draw the free hand sketch of top view and sectional view of a single riveted double cover butt joint. The diameter rivet is 26 mm.
12. Draw free hand sketch of BSW threads with 20 mm pitch along with calculation and dimensioning.
13. Draw free hand sketch of single plate friction clutch.

SECTION-C

14. Draw the assembly drawing (front and top view) of Universal coupling. The part details are provided in Fig. 1.

**FIG. 1**

15. Fig. 2 shows the various details of lathe tail stock. Draw the following view of assembly.

a) Full sectional front view

b) Right side view

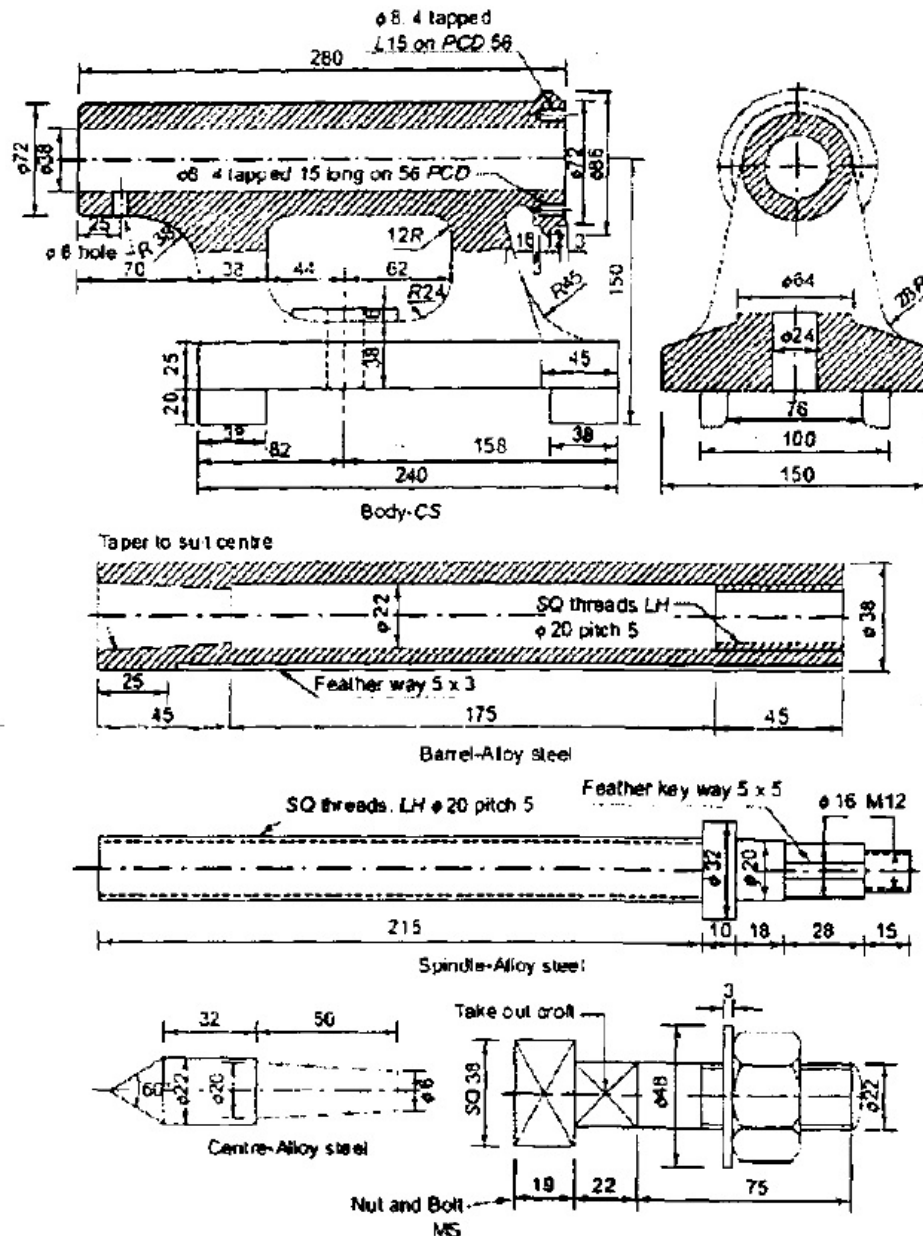


FIG. 2

NOTE : Disclosure of Identity by writing Mobile No. or Making of passing request on any page of Answer Sheet will lead to UMC against the Student.