

Roll No. 

--	--	--	--	--	--	--	--	--	--

Total No. of Pages : 05

Total No. of Questions : 04

B. Arch. (2012 &amp; Onwards) (Sem.-3)

**ARCHITECTURAL DRAWING-III**

Subject Code : BACH-303

M.Code : 70415

Time : 04 Hrs.

Max. Marks : 50

**INSTRUCTIONS TO CANDIDATES :**

1. Attempt any ONE question from UNIT-1.
2. Attempt ONE question from UNIT-2.
3. Do not erase the construction lines.
4. Credit will be given for neat drafting.
5. Assume any missing data and mention the same.
6. The drawings attached are not to scale.
7. All the dimensions in the drawings are in millimetres.

**UNIT-I**

- Q1. Draw sciography in the plan and elevation of the object given in Figure-1.
- Q2. Draw sciography in the plan and elevation of the object given in Figure-2.

**UNIT-II**

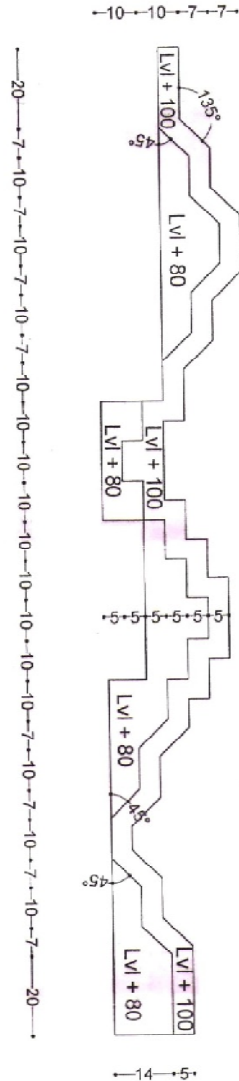
- Q3. Draw a two point perspective by measuring line method of the object whose plan and elevation given in the Figure-3. Also draw the sciography in the perspective drawn.
- Q4. Draw a one point perspective by measuring line method of the object whose plan and elevation are given in the Figure-4. Also draw the sciography in the perspective drawn.

Direction of Light

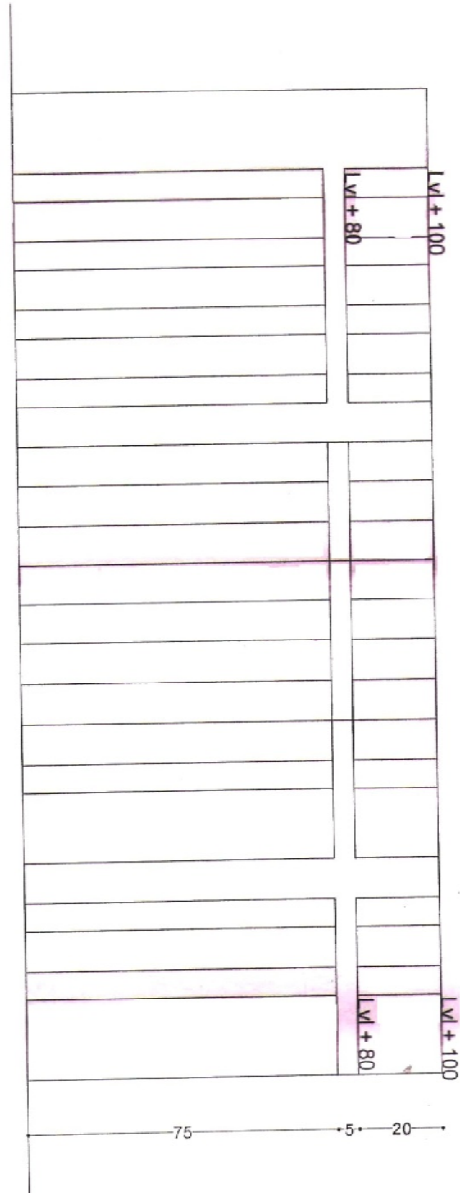
PLAN

FIG-1

Note:  
- Drawing Not to Scale.  
- All Dimensions are in mm's.

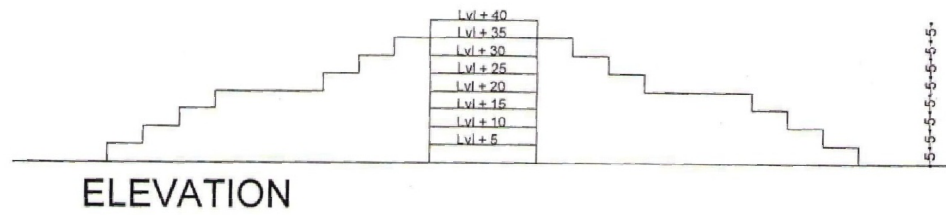


ELEVATION



Direction of Light

Direction of Light



Direction of Light

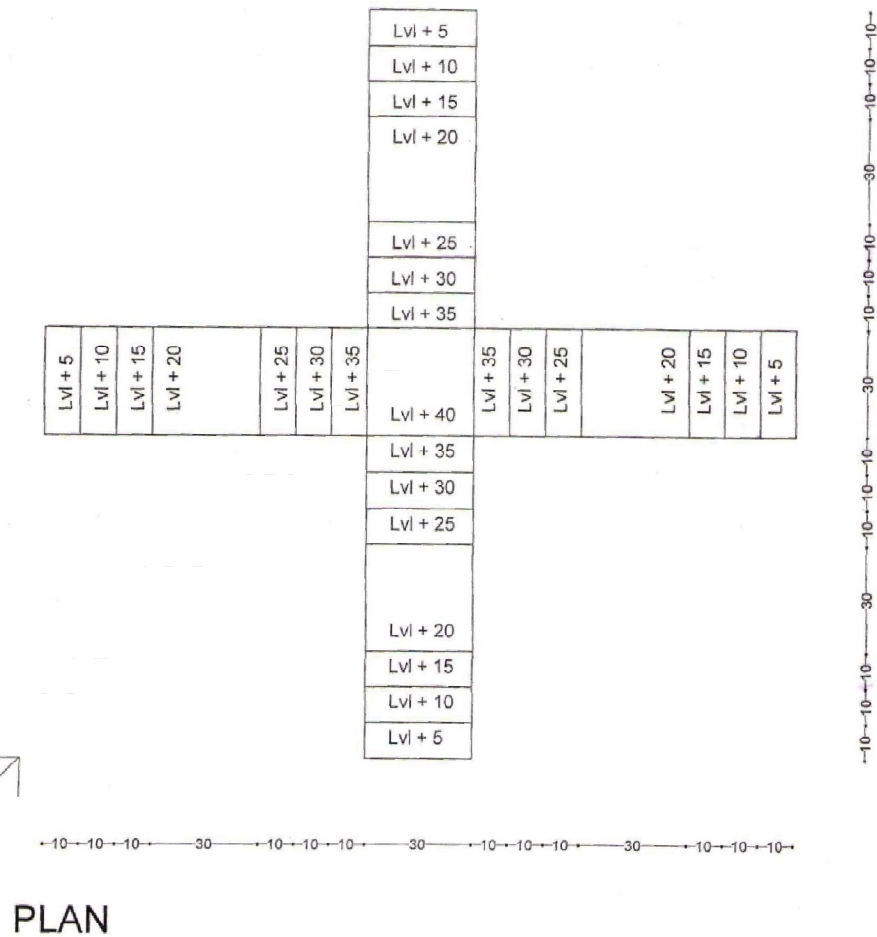
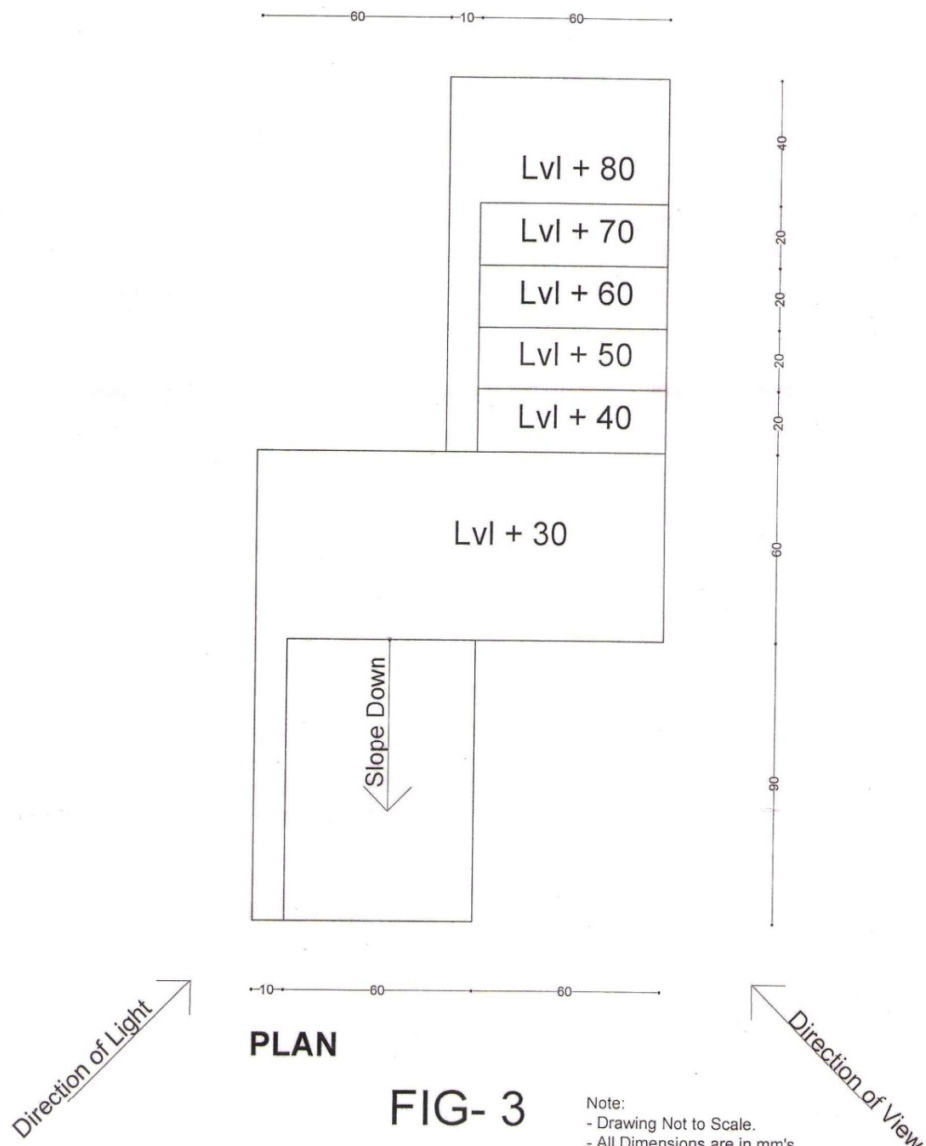
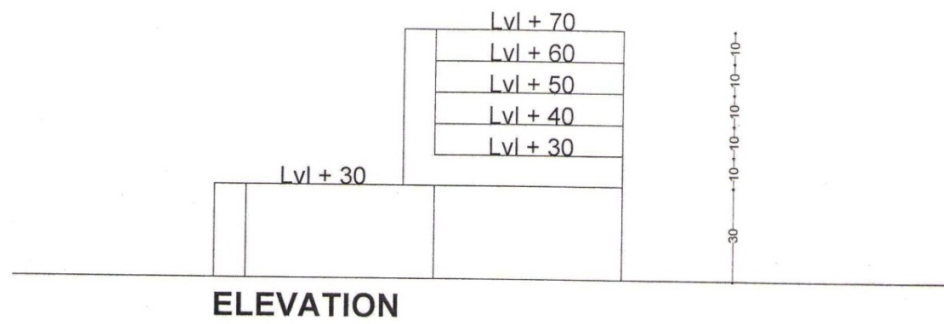
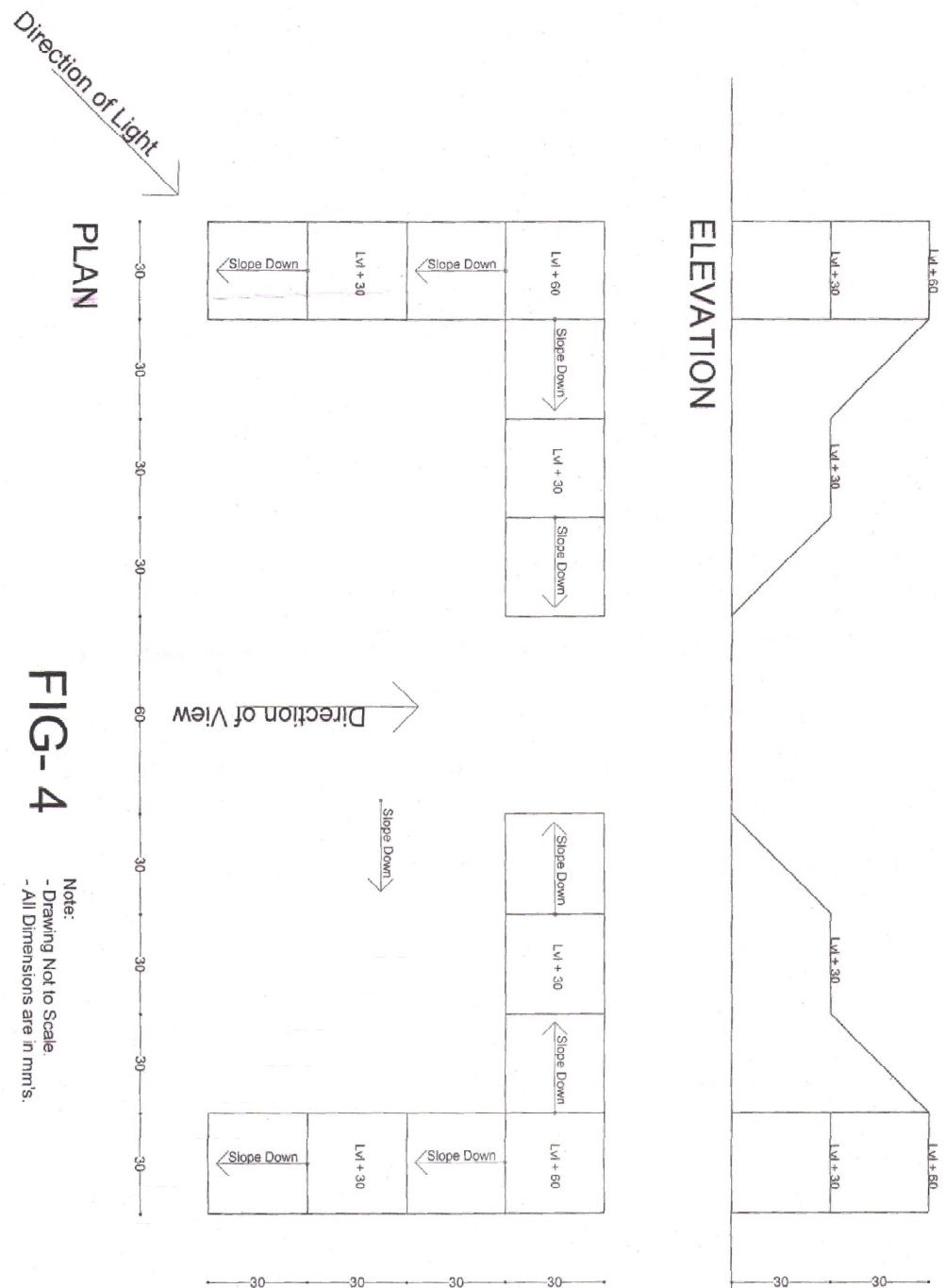


FIG- 2

Note:  
- Drawing Not to Scale.  
- All Dimensions are in mm's.





**NOTE : Disclosure of Identity by writing Mobile No. or Making of passing request on any page of Answer Sheet will lead to UMC against the Student.**