



Roll No.

--	--	--	--	--	--	--	--	--	--

Total No. of Pages : 03

Total No. of Questions : 09

B.Arch.(2012 & Onwards) (Sem.-6)

ESTIMATING, COSTING & SPECIFICATIONS – I

Subject Code : BACH-606

M.Code : 72292

Time : 3 Hrs.

Max. Marks : 60

INSTRUCTIONS TO CANDIDATES :

1. Attempt total FIVE questions with minimum TWO questions from EACH UNIT and COMPULSORY question no. 1.
2. Assume the missing data if any and mention that along with answer.

1. a) What are the different types of Estimate? (2)
b) What do you mean by detailed specification? (2)
c) What are the units of measurement for paint work? (2)
d) What do you mean by standard PWD specification? (2)
e) What are the units of measurement for wood work? (2)

UNIT-I

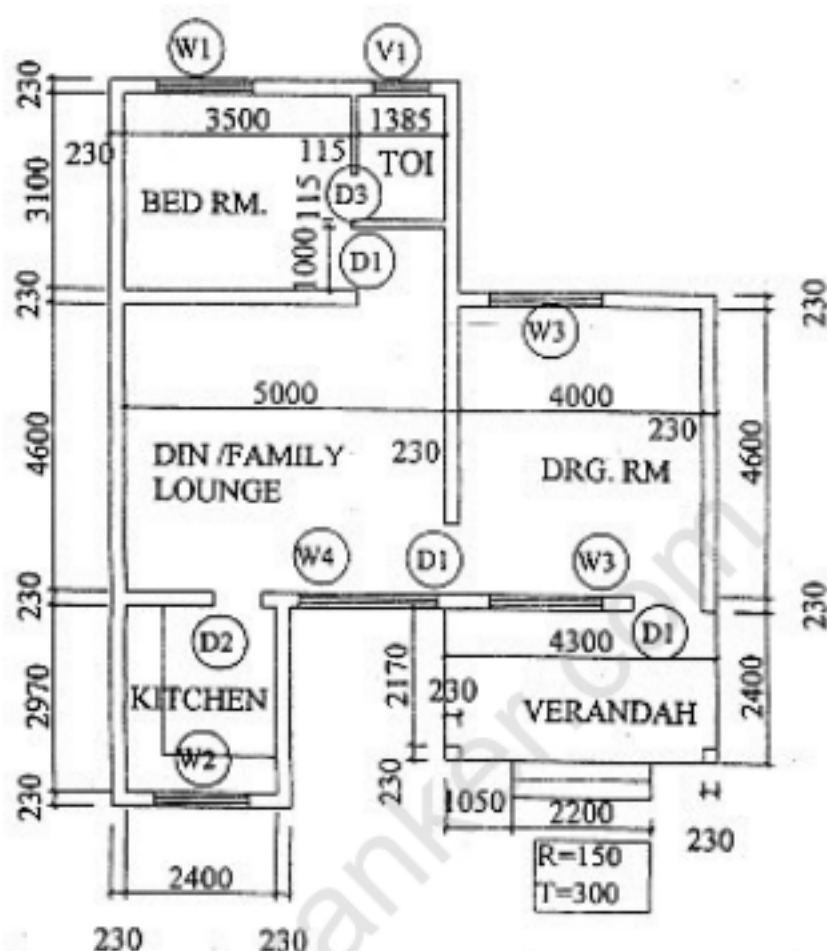
2. Define Estimate. Discuss, in detail, the various methods of approximate estimation as required for a particular type of building. Discuss the merits and demerits of each method of estimation. (12.5)
3. Calculate the material requirement i.e. No. of Cement Bags, Sand, Bricks, and Coarse Aggregate for the following items :
 - a) Cement concrete in 1:3:6 for R.C.C. work excluding reinforcement for total 100 cubic meter quantity. (6)
 - b) 230 mm thick first class brick masonry works for the superstructure of 125 cum quantity in cement mortar 1:6. (6.5)



4. "To finalise the rate of an item, the analysis of rates is must." Justify the statement in context of cost estimation of a multi storied structure with examples. (12.5)
5. Calculate the estimate of bill of quantities of the following items for a single storied structure as given plan. (Assume section by your own)
 - a) Earth Work in excavation in foundation (4)
 - b) Brick work in superstructure (4)
 - c) Dado in kitchen and toilet (4.5)

UNIT-II

6. What is the role of specification for any construction project? Explain the factors, which are kept in mind while writing specification. (12.5)
7. What do you mean by specification? Explain the different types of specification with emphasis on accuracy in specifying the building material. (12.5)
8. What is the general specification for firefighting system in a building? Write the detailed specification for sprinkler system in an educational building. (12.5)
9. Write the detailed specification on the following :
 - a) Damp proof course (6)
 - b) Pointing work (6.5)



GROUND FLOOR PLAN

D1 = 1000 X 2100	W2 = 1500 X 1200
D2 = 900 X 2100	W3 = 1800 X 1350
D3 = 750 X 2100	W4 = 2100 X 1350
W1 = 1500 X 1350	V1 = 900 X 750

NOTE : Disclosure of Identity by writing Mobile No. or Making of passing request on any page of Answer Sheet will lead to UMC against the Student.