

GUJARAT TECHNOLOGICAL UNIVERSITY

BE - SEMESTER- VIII (New) EXAMINATION – WINTER 2019

Subject Code: 2180208

Date: 21/11/2019

Subject Name: Computer Integrated Manufacturing In Automobile

Industry

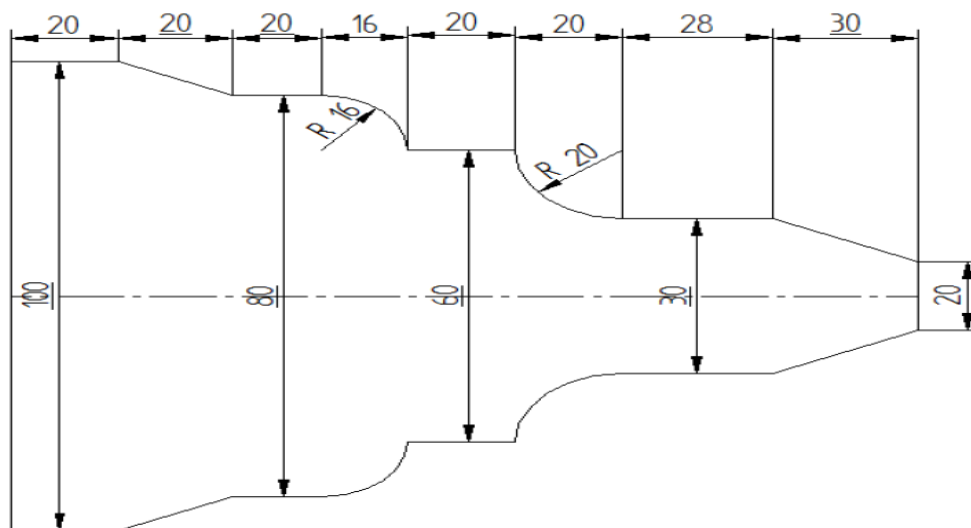
Time: 02:30 PM TO 05:00 PM

Total Marks: 70

Instructions:

1. Attempt all questions.
2. Make suitable assumptions wherever necessary.
3. Figures to the right indicate full marks.

	MARKS
Q.1 (a) Classify CNC machine tools on the basis of : 1. Programming Methods 2. Types of Controllers	03
(b) Draw CIM Wheel.	04
(c) Write a manual part program to turn a component for given below profile with G & M codes. Assume Suitable data for Speed, Feed & depth of cut.	07



All dimensions are in mm.

Q.2 (a) Give Difference between NC and CNC.	03
(b) Why part classification and coding is required in GT?	04
(c) Draw Block diagram of the PLC Architecture and discuss each unit of the PCL.	07
OR	
(c) Describe Structure of Robot. Explain various Robot configurations with line diagram.	07
Q.3 (a) Discuss various elements of Coordinate Measuring Machine.	03
(b) Draw various types of layouts of FMS.	04
(c) Explain OPTIZ classification and coding System.	07
OR	
Q.3 (a) List Application of PLC.	03
(b) Discuss concept of Computer vision and Machine Intelligence.	04
(c) What are the different types of actuators(drives) used in robot? Explain any two in detail.	07
Q.4 (a) List various applications of robots.	03

- (b) Discuss MRP-I and MRP II in brief. **04**
(c) What is an AGV? What are the different types of AGVs? What are the benefits of using AGVs? **07**

OR

- Q.4** (a) Enlist the benefits of flexible manufacturing system. **03**
(b) Discuss Tool supply and Monitoring system. **04**
(c) What are the function of production planning and control? **07**

- Q.5** (a) Discuss concept of transfer line. **03**
(b) What is JIT? How JIT improves Manufacturing system? **04**
(c) Explain design and concept of assembly line in detail. **07**

OR

- Q.5** (a) What is tool compensation? Explain tool length and cutter radius compensation. **03**
(b) What is quantitative analysis of assembly line? **04**
(c) Give comparison between Variant CAPP and Generative CAPP system. State benefits of CAPP. **07**

www.FirstRanker.com