

Roll No.

--	--	--	--	--	--	--	--	--	--

Total No. of Pages : 04

Total No. of Questions : 15

B.Tech. (AE) (2018 Batch) (Sem.-3)

MACHINE DRAWING

Subject Code : BTAE-304-18

M.Code : 76402

Time : 3 Hrs.

Max. Marks : 60

INSTRUCTIONS TO CANDIDATES :

1. SECTION-A is COMPULSORY consisting of TEN questions carrying TWO marks each.
2. SECTION-B contains THREE questions carrying FIVE marks each and students have to attempt any TWO questions.
3. SECTION-C contains TWO questions carrying THIRTY marks each and students have to attempt any ONE questions.
4. Assume any missing data suitably.

SECTION-A**Write briefly :**

1. What are locking devices and why are they used?
2. Name any four head forms of rivets.
3. What is the difference between a key and a cotter?
4. Draw the symbol of first angle projection system.
5. What is the function of a connecting rod in IC engine?
6. Where is a foot step bearing used?
7. What do you understand by a coupling?
8. Differentiate between basic size and actual size.
9. Explain the aligned system of dimensioning.
10. Define washer and give its various types.

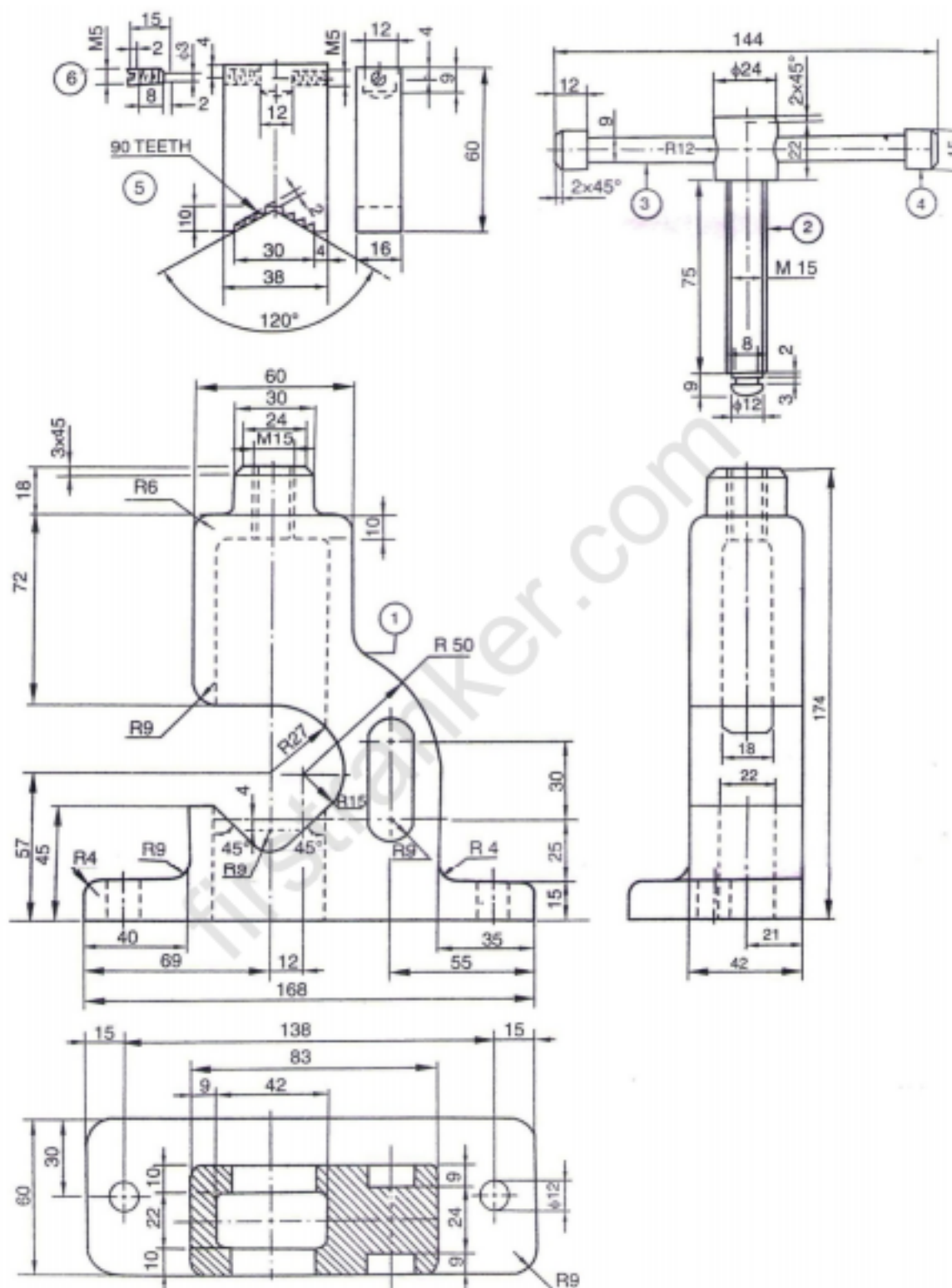


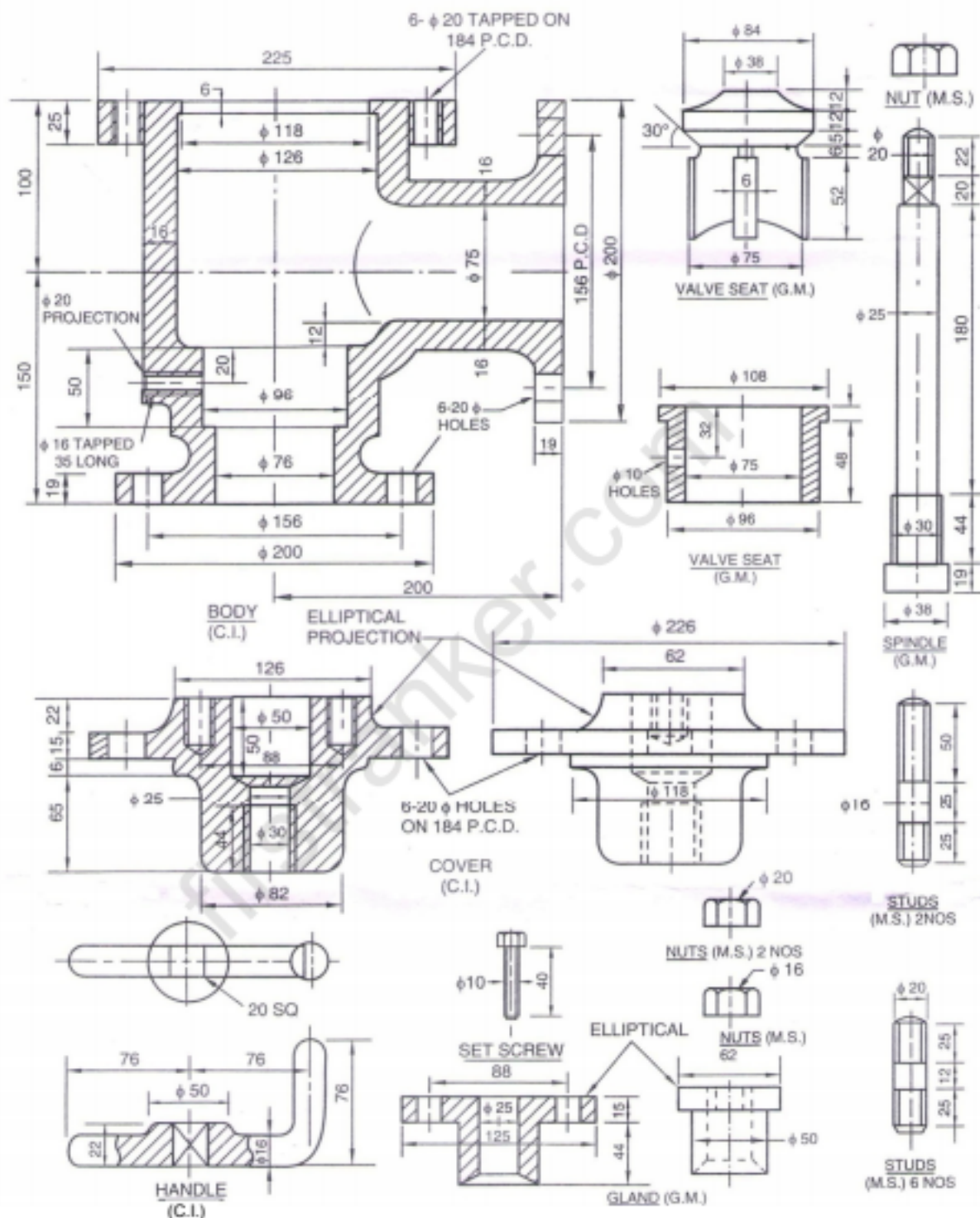
SECTION-B

11. Draw free hand the half sectional front view of a protective type flange coupling on proportionate scale.
12. Draw free hand the plan and sectional elevation of a single riveted double cover butt joint. Take diameter of the rivet as 18 mm.
13. Draw the symbol and sectional representation of the following forms of weld :
 - a) Seam weld
 - b) Single-V butt
 - c) Single-J butt
 - d) Fillet weld

SECTION-C

14. Figure.1 below shows the details of a pipe vice. Assemble the parts and draw (a) front view full in section (b) left side view. Also prepare bill of materials.
15. Figure.2 below shows the details of a stop valve. Assemble the parts and draw (a) front view showing full section (b) right side view. Also prepare bill of materials.


FIG.1


FIG.2

NOTE : Disclosure of Identity by writing Mobile No. or Making of passing request on any page of Answer Sheet will lead to UMC against the Student.