

1. Cancer cells derive nutrition from:

- A. Glycolysis
- B. Oxidative phosphorylation
- C. Increase in mitochondria
- D. From fast food joint

2. Which of the following does not contribute to glucose by gluconeogenesis.

- A. Lactate
- B. Acetyl CoA
- C. Pyruvate
- D. Oxaloacetate

3. A child with low blood glucose is unable to do glycogenolysis or gluconeogenesis . Which of the following enzyme is missing in the child?

- A. Fructokinase
- B. Glucokinase
- C. Glucose 6 phosphatase
- D. Transketolase

4. During prolonged fasting rate of gluconeogenesis is determined by:

- A. Essential Fatty acid in liver
- B. Alanine in liver
- C. Decreased c GMP
- D. ADP in liver

5. Why is Glucose 6 Phosphate in the cytoplasm of hepatocyte not acted upon by Glucose 6 phosphatase as soon as it is formed?
- A. Thermodynamically possible only when gluconeogenesis occurs
  - B. Needs Protein Kinase for its activation
  - C. Enzyme is present in SER, Glucose 6 phosphate needs to be transported in to SER.
  - D. Steric inhibition of Phosphatase by albumin.

6. A 5 years old presents with hepatomegaly, hypoglycemia, ketosis. The diagnosis is

- A. Mucopolysaccharodosis
- B. Glycogen storage disorder
- C. Lipopolysaccharidosis
- D. Diabetes mellitus

7. An infant has hepatomegaly, hypoglycemia, hyperlipidemia, lactic acidosis and normal structured glycogen deposition in liver. What is the diagnosis:

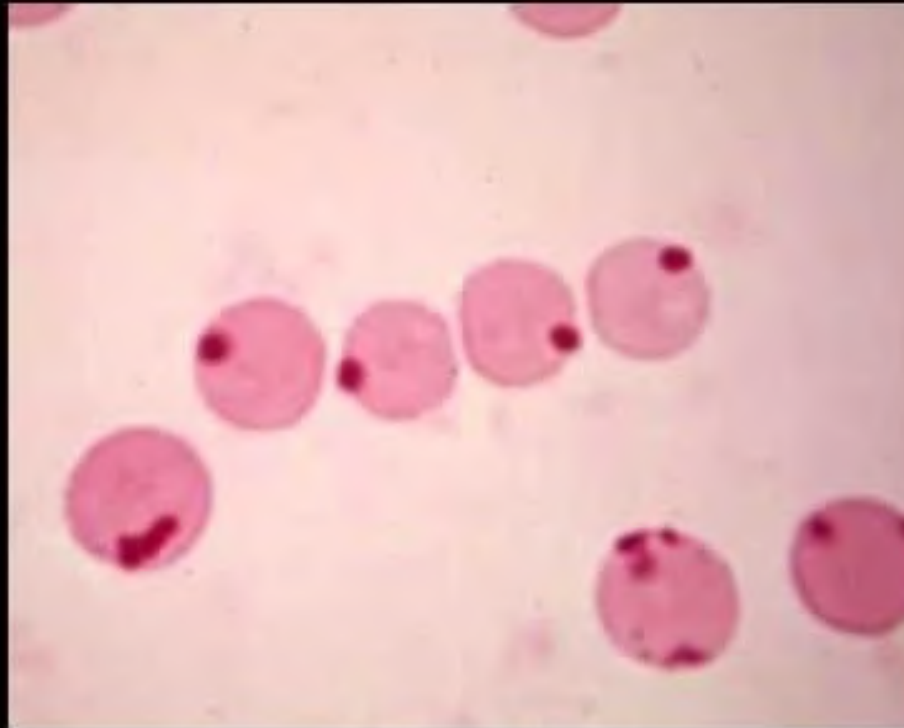
- A. Her's disease
- B. Von Gierke's disease
- C. Cori's disease
- D. Anderson's disease
- E. Pompe's disease

8. Hereditary Fructose Intolerance is due to deficiency of:

- A. Aldolase B
- B. Aldolase A
- C. Fructokinase
- D. Sucrase

9. A newborn baby refuses breast milk since second day of birth, vomits on forced feeding, develops diarrhea on third day, by fifth day she develops jaundice with hepatomegaly and eye show cataract. Urinary reducing sugar was positive but blood glucose was found low. The most likely cause is deficiency of:

- A. Galactose-1- phosphate uridyl transferase
- B. Beta galactosidase
- C. Glucose 6 phosphatase
- D. Galactokinase



## 10. Tumor marker associated with ovarian cancer:

- 1. PSA
- 2. CEA
- 3. CA-125
- 4. Beta- HCG