

Roll No. 

--	--	--	--	--	--	--	--	--	--	--	--	--	--	--	--	--	--	--	--	--

Total No. of Pages : 02

Total No. of Questions : 03

B. Architecture (Sem.-3)

**ARCHITECTURAL DRAWING – III**

Subject Code : AR-225

M.Code : 45022

Time : 4 Hrs.

Max. Marks : 70

**INSTRUCTIONS TO CANDIDATES :**

1. Question No. 1 is **COMPULSORY**.
2. Attempt any **ONE** question from the remaining questions.
3. Attempt **TWO** questions in total.
4. Do not erase the construction lines.
5. Credit will be given for neat drafting.
6. Assume any missing data and mention the same.
7. The drawings attached are not to scale.
8. All the dimensions in the drawings are in millimetres.

**UNIT-I**

- Q1. Draw a **ONE POINT** perspective by measuring line method of the object whose plan and elevation are given in the Figure-1. Assume an appropriate eye level yourself. (40)

**UNIT-II**

- Q2. Draw sciography in the one point perspective drawn for the Question No. 1. (30)

**UNIT-III**

- Q3. A vertical cone, base 80 mm diameter and axis 90 mm long, is penetrated by a square prism of base 32mm side. The axis of the prism is parallel to and 12 mm away from that of the cone. Draw the projections when the plane containing the two axes is parallel to the vertical plane and the faces of the prism are equally inclined to the vertical plane.(30)

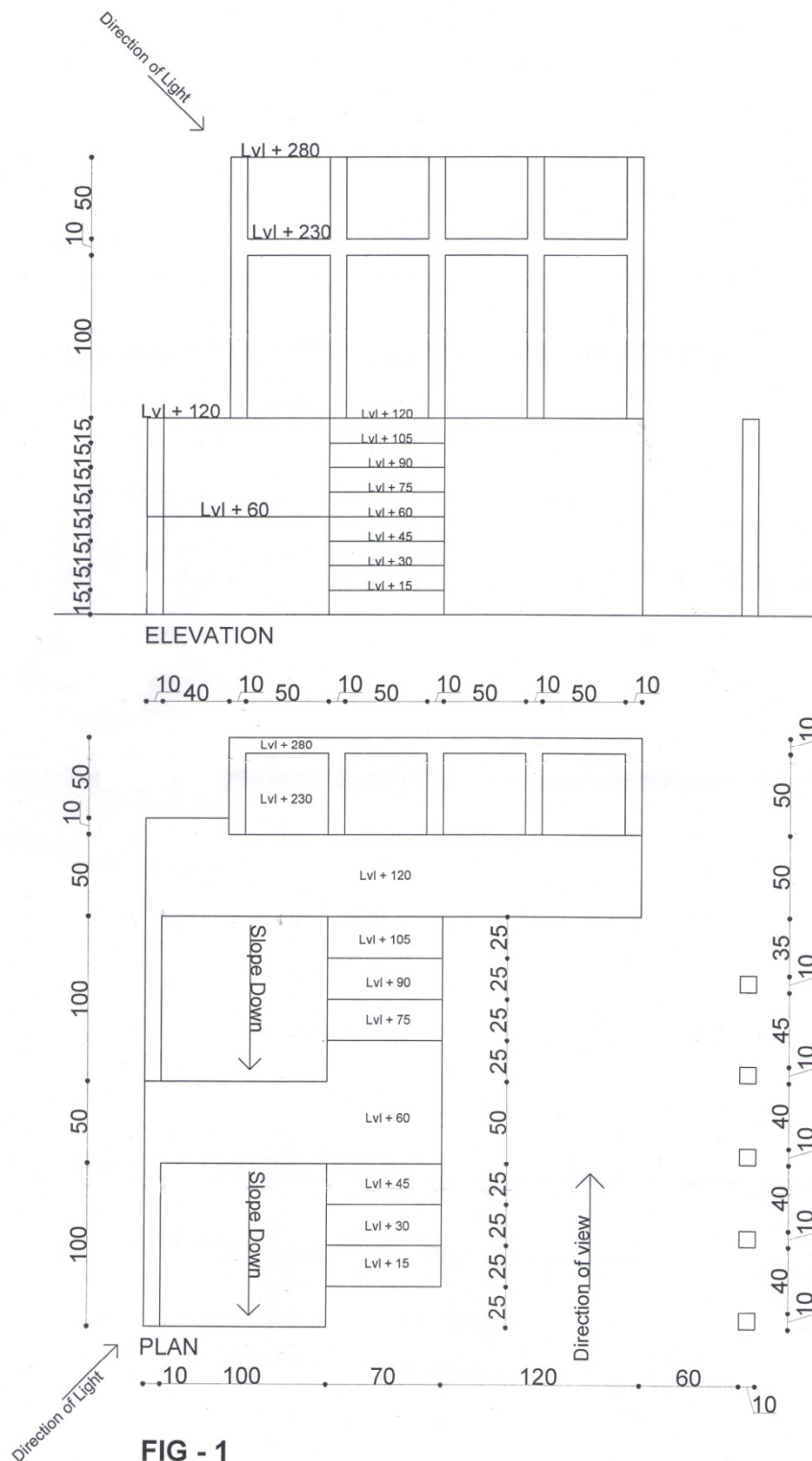


FIG.1

**NOTE : Disclosure of identity by writing mobile number or making passing request on any page of Answer sheet will lead to UMC against the Student.**