

Roll No.

--	--	--	--	--	--	--	--	--	--	--	--	--	--	--	--	--	--	--	--

Total No. of Pages : 03

Total No. of Questions : 09

B.Arch.(2012 & Onwards) (Sem.-6)

ESTIMATING, COSTING & SPECIFICATIONS – I

Subject Code : BACH-606

M.Code : 72292

Time : 3 Hrs.

Max. Marks : 60

INSTRUCTIONS TO CANDIDATES :

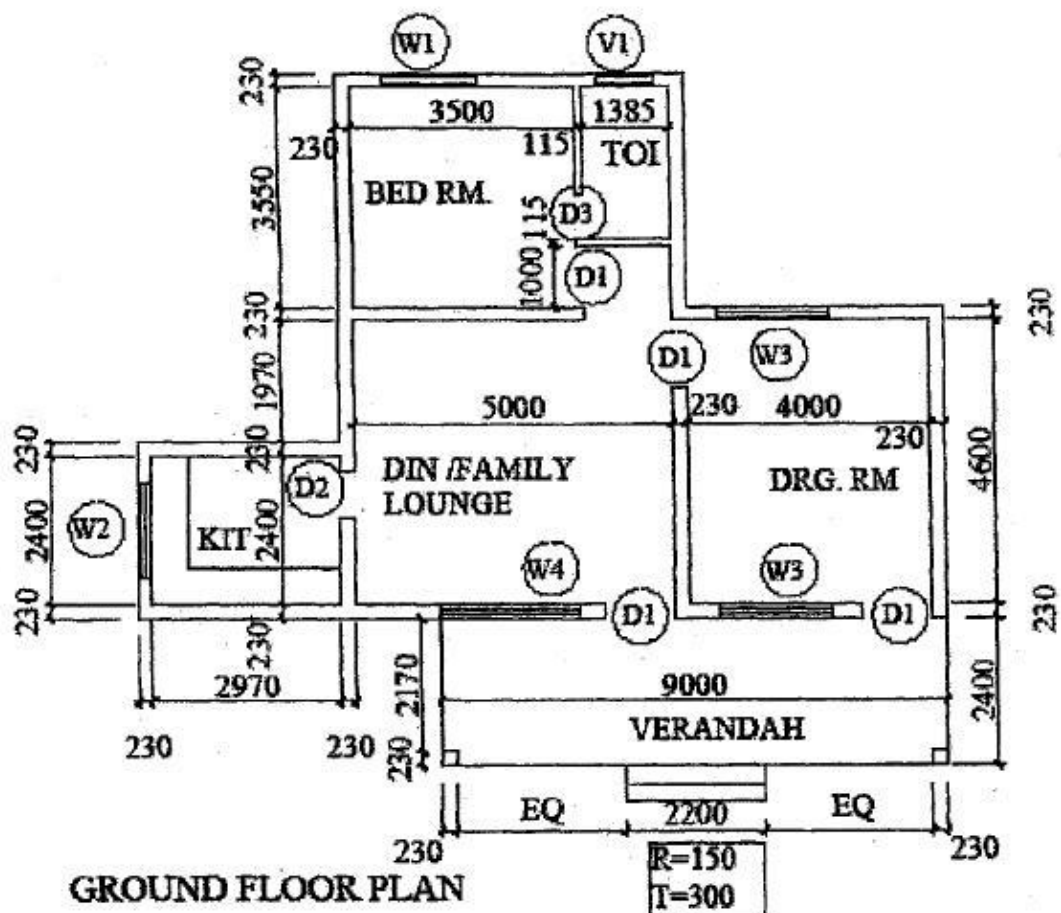
1. Attempt total FIVE questions with minimum TWO questions from EACH UNIT and COMPULSORY question no. 1.
2. Assume the missing data if any and mention that along with answer.

- Q1. a) What do you mean by Estimate? (2)
- b) Enlist the different types of specification? (2)
- c) What are the units of measurement for plaster work in cement mortar? (2)
- d) What do you mean by standard PWD specification? (2)
- e) What are the units of measurement for earth work in excavation? (2)

UNIT-I

- Q2. Enlist the different types of Estimate. Discuss the need and importance of estimate at various stages of project. Explain the most accurate method of estimation, in detail. (12.5)
- Q3. Calculate the material requirement *i.e.* No. of Cement Bags, Sand, Bricks, and Coarse Aggregate for the following items :
- a) Cement concrete in 1:2:4 for R.C.C. work excluding reinforcement for total 200 cubic meter quantity. (6)
- b) 230 mm thick first class brick masonry works for the superstructure of 130 cum quantity in cement mortar 1:6. (6.5)

- Q4. "To finalise the rate of an item, the analysis of rates is must." Justify the statement in context of cost estimation of a multi storied structure with examples. (12.5)
- Q5. Calculate the estimate of bill of quantities of the following items for a single storied structure as given plan. (Assume section by your own)
- Earth Work in excavation in foundation (4)
 - Brick work in superstructure (4)
 - Cement Plaster inside the building (4.5)



D1 = 1000 X 2100	W2 = 1500 X 1200
D2 = 900 X 2100	W3 = 1800 X 1350
D3 = 750 X 2100	W4 = 2100 X 1350
W1 = 1500 X 1350	V1 = 900 X 750

UNIT- II

- Q6. What is the need of specification? Explain the factors, which are kept in mind while writing specification. (12.5)
- Q7. Write in detail the importance of specification writing for architects. Explain the various steps involved in specification writing. (12.5)
- Q8. What is the general specification for water supply system in a residential building? Write the detailed specification for European water closet and wash basin. (12.5)
- Q9. Write the detailed specification on the following :-
- a) Damp proof course (6)
 - b) Kota stone flooring (6.5)

NOTE : Disclosure of Identity by writing Mobile No. or Making of passing request on any page of Answer Sheet will lead to UMC against the Student.