

Roll No.

--	--	--	--	--	--	--	--	--	--

Total No. of Pages : 02

Total No. of Questions : 06

B. Architecture (2012 & Onwards) (Sem.-9)
BUILDING CONSTRUCTION & MATERIALS-VIII

Subject Code : BACH-902

M.Code : 74096

Time : 4 Hrs.

Max. Marks : 75

INSTRUCTIONS TO CANDIDATES :

1. Attempt minimum one question from each unit.
2. Attempt three questions in total. All questions carry equal marks.
3. Assume any Missing data.

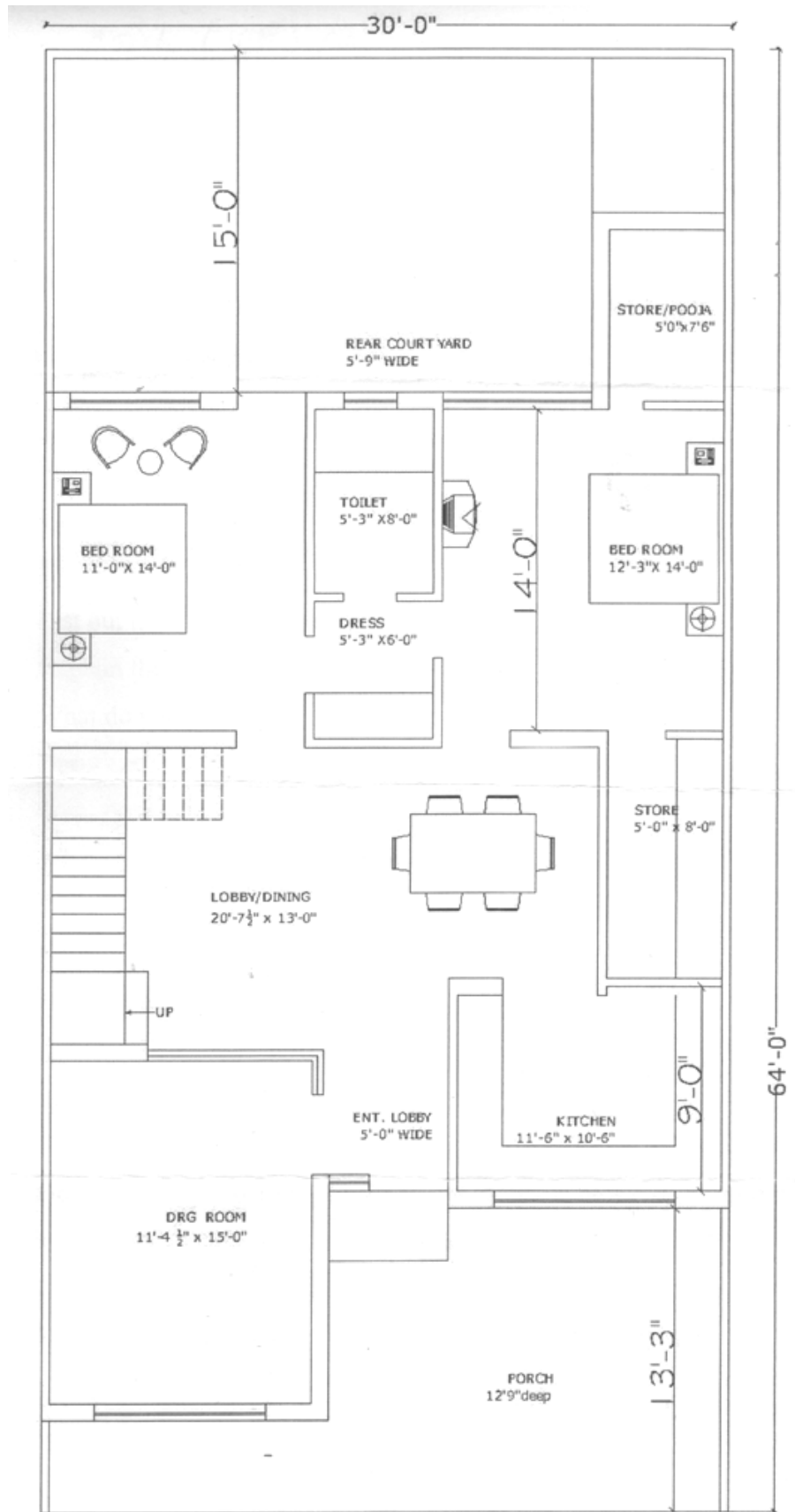
UNIT-I

- Q1. Prepare the centre line plan of the enclosed residence plan. Draw the foundation details for 230 mm and 115 mm thick wall.
- Q2. Prepare the detailed Joinery schedule of the given residence plan and correlate it with plan. Also prepare one typical detail for a window.
- Q3. Draw following construction details of a commercial kitchen of 5.0 m × 8.0 m size :
- a) Layout plan by defining entry and service door positions
 - b) Plan below counter
 - c) Section through counter

UNIT-II

- Q4. Draw a typical section through 6 passenger lift (elevator) shaft for 6 storeys building on scale of 1:100.
- Q5. Explain through sketches the various details of a curtain wall *i.e.* curtain wall assembly, fixing with main structure and fixing of glass unit.
- Q6. How the storage and handling of construction materials is carried out on the construction site? Explain in detail with tentative layout.

Enls : Plan



GROUND FLOOR PLAN

NOTE : Disclosure of Identity by writing Mobile No. or Making of passing request on any page of Answer Sheet will lead to UMC against the Student.