

B.Tech III Year II Semester (R09) Supplementary Examinations May/June 2016

ESTIMATION, COSTING & VALUATION

(Civil Engineering)

Time: 3 hours

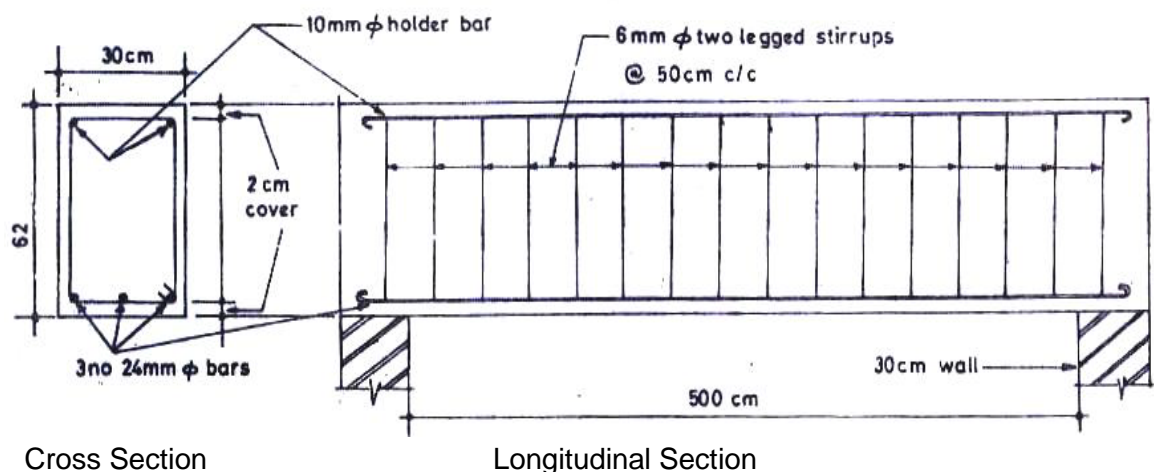
Max. Marks: 70

Answer any FIVE questions

All questions carry equal marks

Standard scheduled of rates is permitted in the examination hall

- 1 Define Estimate. List out the different types of Estimates .What are the factors to be considered during preparation of a detailed estimate.
- 2 Explain the different methods for estimating building works.
- 3 Estimate the quantity of earth work for an embankment, 120 m long, 8 m wide at crest and whose side slopes is 2 to 1. The central height from 0 to at every 30 m intervals are 0.60 m, 1.2 m, 1.6 m, 2.0 m and 1.3 m. Calculate the earth work using mid section formula and trapezoidal formula.
- 4 Give the rate analysis for the following:
 - (a) Earth work excavation.
 - (b) Lime concrete.
 - (c) Cement concrete.
- 5 The following figure shows the longitudinal section & cross-section of a simple beam of clear span 5.0 m. The thickness of supporting wall is 300 mm. Workout the total quantity of the reinforcement in the beam. Also prepare the bar bending schedule.



- 6 (a) What are the criteria that ensure validity of a contract?
(b) Discuss in brief about different contract documents.
- 7 (a) Define valuation and explain the purpose of valuation.
(b) Explain capitalized value with a simple example
- 8 Write the detailed specifications for the following items:
 - (a) Specification for a first class building.
 - (b) Plastering with cement mortar 1:3.