

Code: R7220401

R07

B.Tech II Year II Semester (R07) Supplementary Examinations December/January 2015/2016

PULSE & DIGITAL CIRCUITS

(Common to ECE, E.Con.E & ECC)

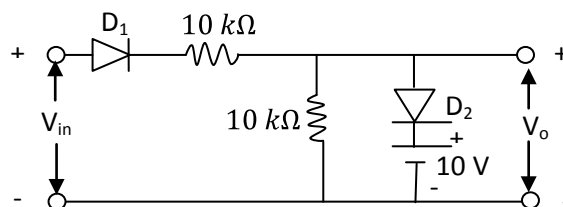
(For 2008 Regular admitted batch only)

Time: 3 hours

Max. Marks: 80

Answer any FIVE questions
All questions carry equal marks

- 1 (a) Explain the response of low pass RC circuit to an exponential input.
(b) Explain RC double differentiator circuit.
- 2 (a) For the clipper circuit shown below, the input is $50 \sin \omega t$. Draw the transfer characteristics and input – output waveforms, assuming ideal diode.



- (b) Explain the two way parallel clipper circuit.
- 3 (a) Explain how diode acts as a switch.
(b) Draw the SCR characteristics and explain:
 - (i) Holding current.
 - (ii) Forward break over voltage.
- 4 (a) Design an astable multivibrator to meet the following specifications $V_{CC} = 10 \text{ V}$, $I_C = 2 \text{ mA}$, $h_{FE} = 30$. The output should be a square wave of 1 KHz with 60% duty cycle.
(b) Explain the working of self biased binary with the help of neat circuit diagram.
- 5 (a) Derive the expression for sweep speed error.
(b) Draw and explain bootstrap sweep circuit using Darlington transistor.
- 6 (a) Explain how a sinusoidal oscillator can be used as a frequency divider.
(b) Explain the principles of synchronization with the help of an example.
- 7 (a) What is pedestal? How it effect the output of a sampling gate?
(b) Explain the operation of four diode bi-directional sampling gate.
- 8 (a) Explain the two input NOR gate of DTL family.
(b) Draw and explain the circuit diagram of a diode OR gate for positive logic.
