

Code: 9A03303

**R09**

B.Tech II Year I Semester (R09) Supplementary Examinations June 2017

**MACHINE DRAWING**  
(Mechanical Engineering)

Time: 4 hours

Max. Marks: 70

Answer all sections

All answers should be on drawing sheet only.

Answers on the drawing sheet only will be evaluated.

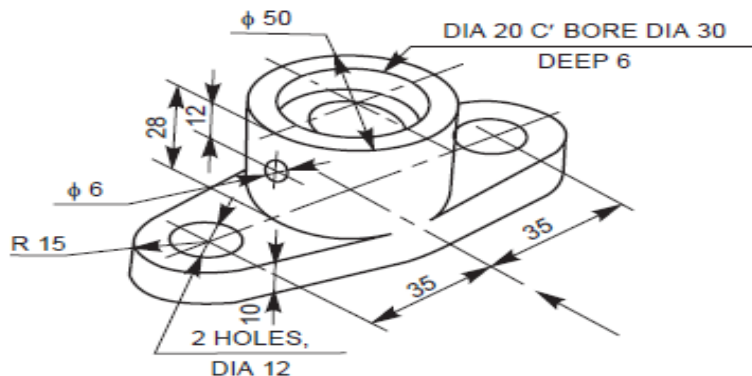
First angle projection to be adopted.

## Section – I

(Answer any two questions, 02 x 4 = 8 Marks)

\*\*\*\*\*

- 1 Draw the conventional representation of straight knurling, cylindrical compression spring and worm wheel.
- 2 Draw the sectional front view for the following:



- 3 Giving proportionate dimensions, sketch any two forms of commonly used rivet heads, choosing the rivet diameter as 10 mm.

## Section – II

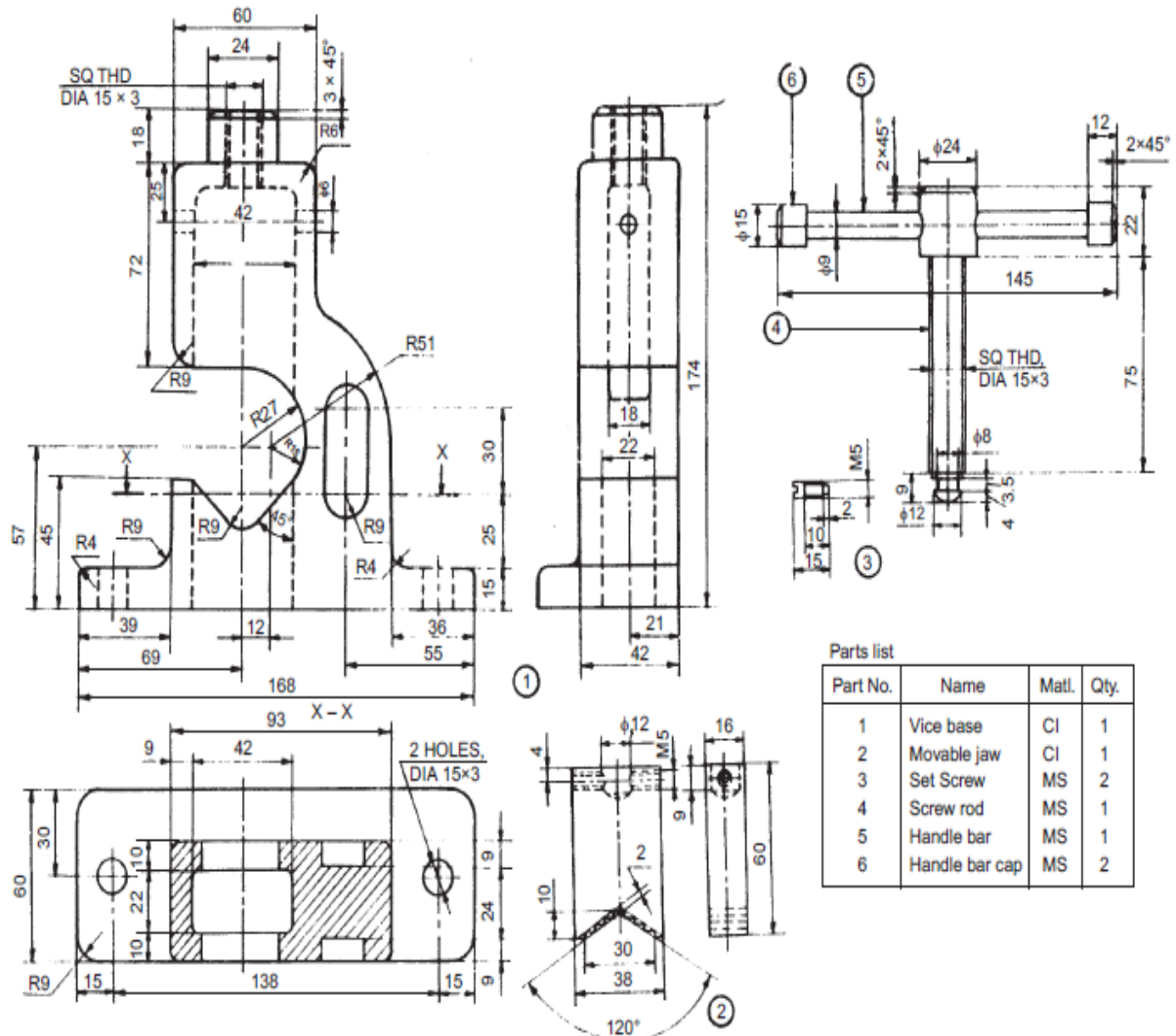
(Answer any two questions, 02 x 10 = 20 Marks)

- 4 Draw the following by considering nominal diameter of the bolt or nut is 30 mm.
  - (a) Two views of hexagonal nut.
  - (b) Eye foundation bolt.
- 5 Draw the sectional front view and top view of double riveted double cover zig-zag butt joint to connect plates of 20 mm thickness.
- 6 Draw:
  - (a) Half sectional view from the front, top half in section.
  - (b) View from the side of a bushed pin type flange coupling, indicating properties to connect two shafts, each of diameter 30 mm.

Contd. in page 2

Section – III  
(Compulsory question, 01 x 42 = 42 Marks)

- 7 The details of pipe vice are shown in figure below. Draw the following assembled vies:
- Full sectional front view.
  - View from above.



\*\*\*\*\*