

Code No: RT42011

R13**Set No. 1**

IV B.Tech II Semester Supplementary Examinations, July/August - 2017

ESTIMATING, SPECIFICATIONS & CONTRACTS

(Civil Engineering)

Time: 3 hours**Max. Marks: 70***Question paper consists of Part-A and Part-B**Answer any THREE questions from Part-A**Part-B is compulsory*

PART-A (3x14=42 Marks)

1. a) Explain in detail about the various types of detailed estimate. [9]
b) What are the functions of an abstract of an estimate? [5]
2. Describe the procedure for the calculation of rate for the following
a) C.C 1:5:10 in foundation with brick ballast 40 mm thick unit 1 cum
b) R.C.C. brick work on slab etc 1:3mortar unit 1cum [14]
3. What do you understand by bar bending and what factors plays major role in the case of bar bending? Explain in detail. [14]
4. a) What is meant by contract? Explain different types of contracts? [7]
b) State any three methods of calculation of earth work for road. Explain any one of them. [7]
5. a) What is meant by valuation? Write the different methods of valuation? [7]
b) Explain any case study in valuation of building. [7]
6. Write the specification for the following:
a) Brickwork 1st class
b) Plastering cement mortar or lime mortar [14]

PART-B (1x28 = 28 Marks)

7. The plan and sections of a one roomed building is shown in figure 1 (a) & 1 (b) below. Prepare quantities for the following items of work by using any one method.
(i) Earthwork in excavation in foundation
(ii) Brickwork above ground level.
(iii) 8cm thick lime concrete terracing over roof
(iv) 10cm thick R.C. roof [28]

Code No: RT42011

R13

Set No. 1

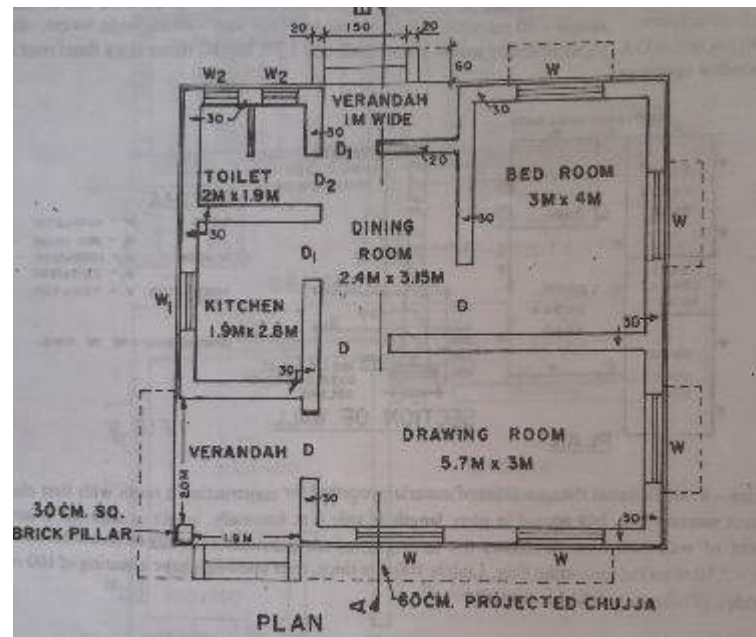


Figure 1(a)

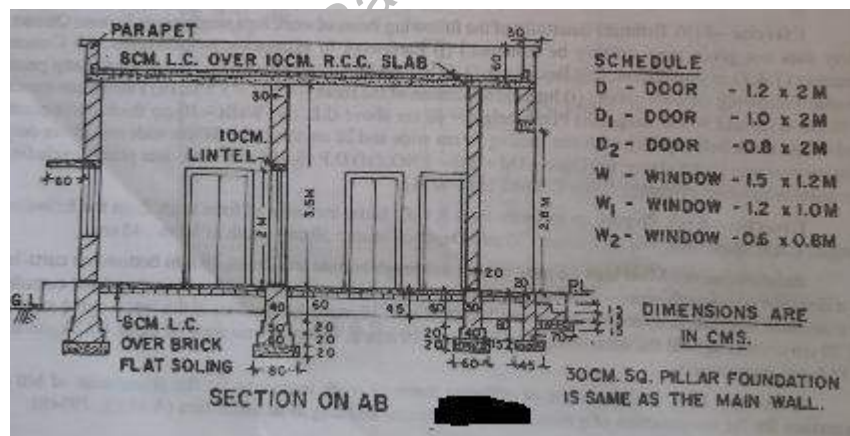


Figure 1(b)