

Code No: R22036

R10**SET - 1****II B. Tech II Semester Supplementary Examinations, Nov/Dec-2016****MACHINE DRAWING**

(Com. to ME, AME)

Time: 3 hours

Max. Marks: 75

Note: Part A: Answer any TWO of the following questions:**PART-B** is compulsory.

~~~~~

(12.5M × 2 = 25M)

**PART-A**

1. a) Sketch the conventional representation of the following (7M)  
(i) Internal threads (ii) splined shaft (iii) bearing (iv) wood  
(v) concrete (vi) white metal (vii) kerosene  
b) Sketch a double start square thread of pitch 5 mm and nominal diameter 50 mm. (5.5M)
2. a) Sketch neatly, giving proportionate dimensions, the eye foundation bolt of diameter 20mm. (6.5M)  
b) Sketch taper sunk key in two views, as fitted in position between a shaft and the mounting. Choose the shaft diameter as 20 mm and the hub diameter of the mounting as 40 mm. (6M)
3. Draw (a) Sectional view from the front and (12.5M)  
(b) view from above of the Double riveted, double strap zig-zag butt joint join plates of thickness 10 mm

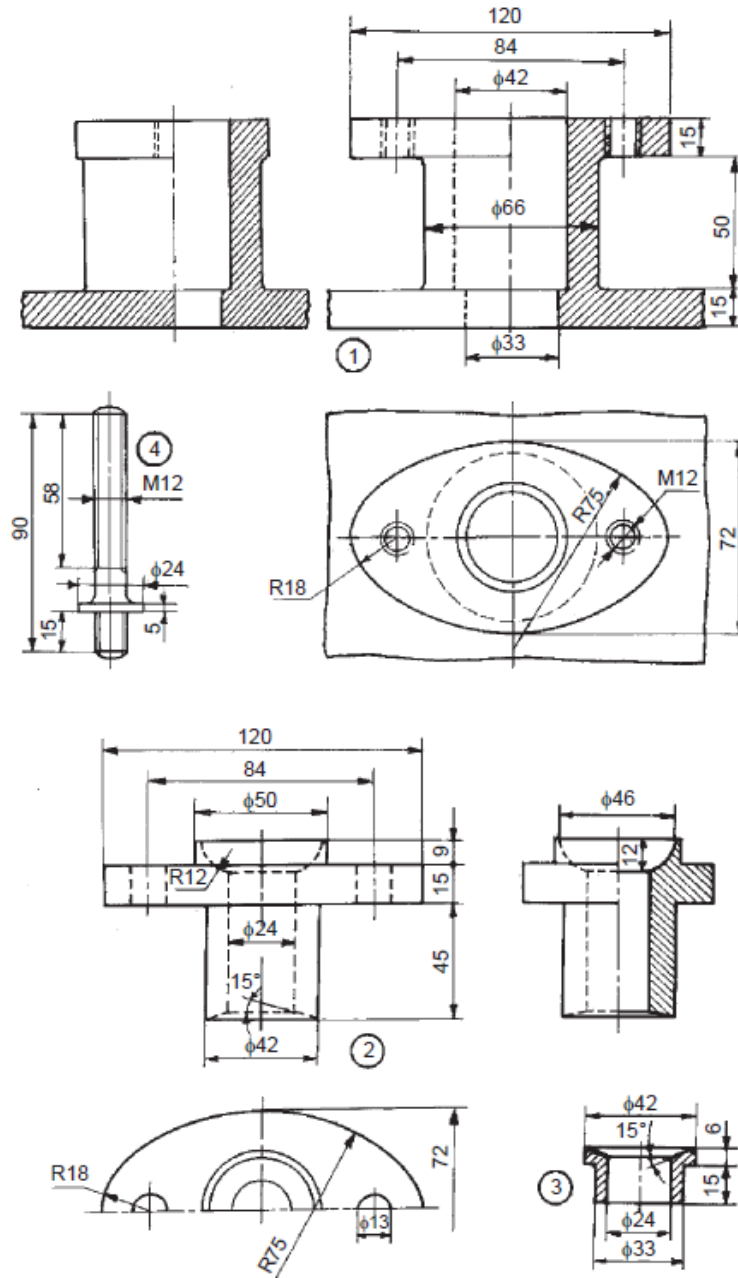
**PART-B**

4. Details of stuffing box are given in fig 1. Assemble all the parts and draw (50M)  
(a) Half sectional view from the front  
(b) Top view

Code No: R22036

**R10**

**SET - 1**



Parts list

| Part No. | Name     | Matl  | Qty |
|----------|----------|-------|-----|
| 1        | Body     | CI    | 1   |
| 2        | Gland    | Brass | 1   |
| 3        | Bush     | Brass | 1   |
| 4        | Stud     | MS    | 2   |
| 5        | Nut, M12 | MS    | 2   |

**Fig. 1** Stuffing box

\*\*\*\*\*