

Code No: RT22035

# R13

SET - 1

## II B. Tech II Semester Regular/ Supplementary Examinations, April/May-2017

# MACHINE DRAWING

(Com. to ME, AME, MM)

Time: 3 hours

Max.

Marks: 70

Note: 1. Question Paper consists of two parts (**Part-A** and **Part-B**)

2. Answer **TWO** question from **Part-A**

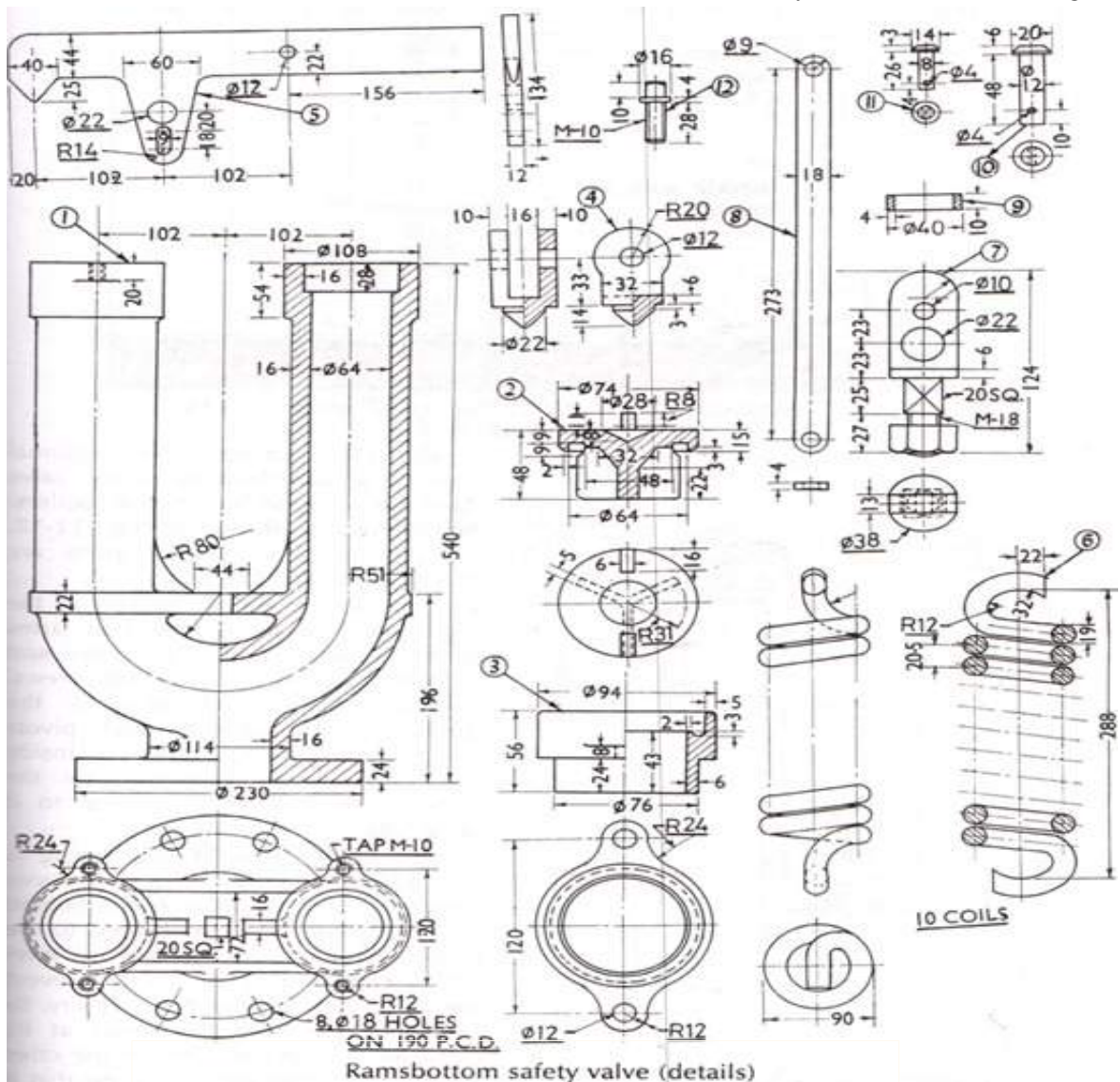
**3. Part-B is compulsory**

**PART – A**

1. Draw any three forms of triangular or V thread assuming a pitch of 15 mm.
2. Sketch the three views of triple riveted zig zag lap joint of 12 mm thick plates.
3. Draw the two views of oldham's coupling for shaft of 50 mm diameter.

**PART – B**

4. Draw the left half sectional front view of the rams bottom safety valve, as shown in Figure:



Code No: RT22035

**R13**

**SET - 1**

13.	Split-pin (not shown)	C-30	3	
12.	Cap-screw	C-30	4	
11.	Pin (link)	C-30	2	
10.	Pin (pivot)	C-30	1	
9.	Collar	C-30	1	
8.	Link	C-30	2	
7.	Shackle with nut	C-30	1	
6.	Spring	Spring-steel	1	
5.	Lever	C-30	1	
4.	Pivot	C-30	1	
3.	Seat	C-30	2	
2.	Valve	G.M.	2	
1.	Body	C.I.	1	

No.	Name of part	Material	No. off	Remark
-----	--------------	----------	---------	--------

Code No: RT22035

**R13**

SET - 2

## II B. Tech II Semester Regular/ Supplementary Examinations, April/May-2017

# MACHINE DRAWING

(Com. to ME, AME, MM)

Time: 3 hours

Max.

Marks: 70

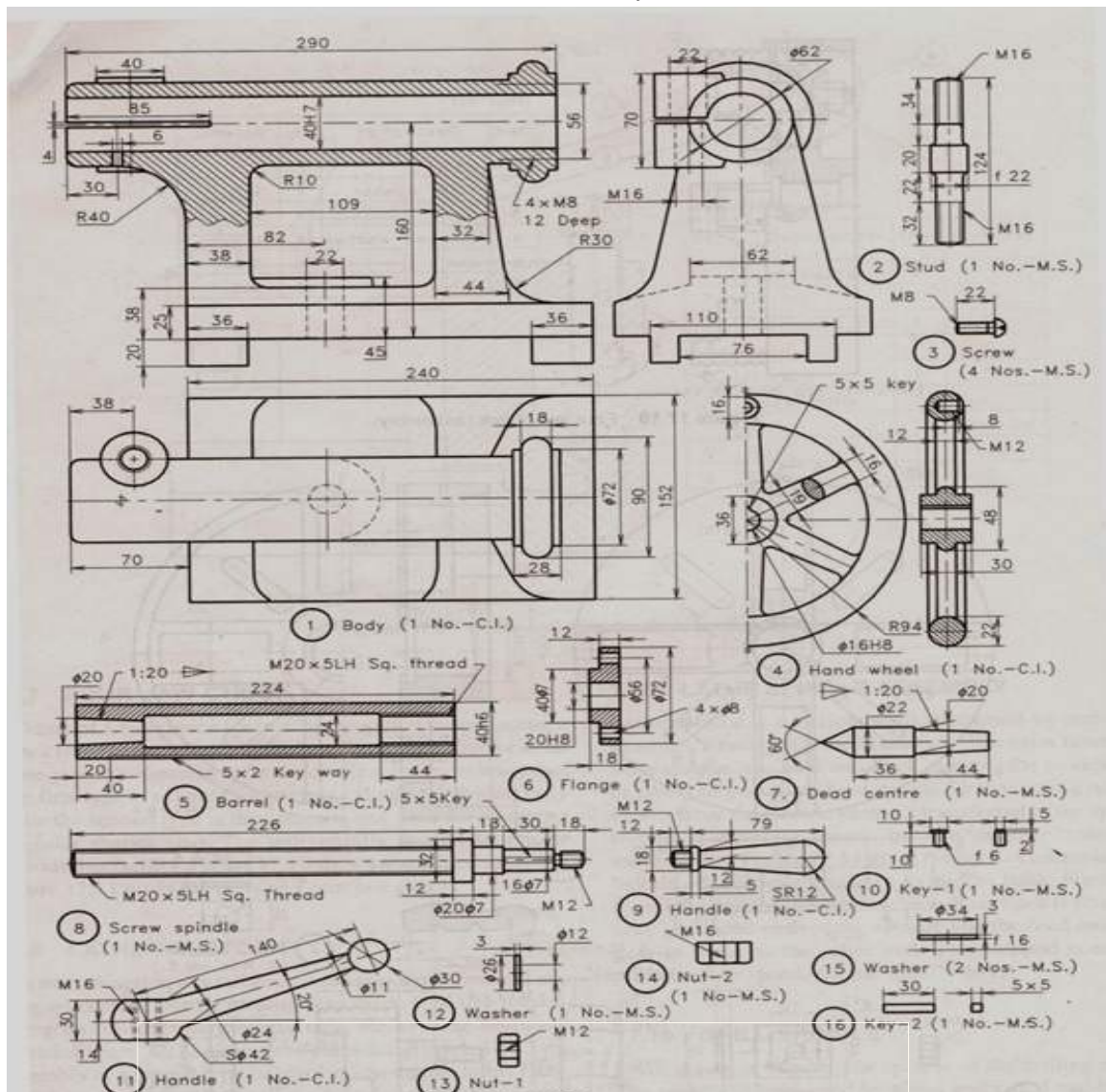
- Note: 1. Question Paper consists of two parts (**Part-A** and **Part-B**)  
2. Answer **TWO** question from **Part-A**  
3. **Part-B** is compulsory

**PART- A**

1. Draw the any three profiles of square thread of pitch 5 mm.
2. Sketch the double riveted double strap butt joint of 12 mm thick plates
3. Draw the two views of universal coupling for shaft of 50 mm diameter.

**PART- B**

4. Draw the sectional elevation of tail stock assembly.



1 of 2

Code No: RT22035

**R13**

SET - 2

Item list

Item	Description	Qty.	Material
1	Body	1	C.I.
2	Stud	1	M.S.
3	Screw	4	M.S.
4	Hand wheel	1	C.I.
5	Barrel	1	C.I.
6	Flange	1	C.I.
7	Dead centre	1	Steel
8	Screw spindle	1	M.S.

Item	Description	Qty.	Material
9	Handle-1	1	C.I.
10	Key-1	1	M.S.
11	Handle-2	1	C.I.
12	Washer-1	1	M.S.
13	Nut-1	1	M.S.
14	Nut-2	1	M.S.
15	Washer-2	2	M.S.
16	Key-2	1	M.S.

2 of 2



Code No: RT22035

**R13**

SET - 3

## II B. Tech II Semester Regular/ Supplementary Examinations, April/May-2017

## MACHINE DRAWING

(Com. to ME, AME, MM)

Time: 3 hours

Max.

Marks: 70

Note: 1. Question Paper consists of two parts (**Part-A** and **Part-B**)

2. Answer **TWO** question from **Part-A**

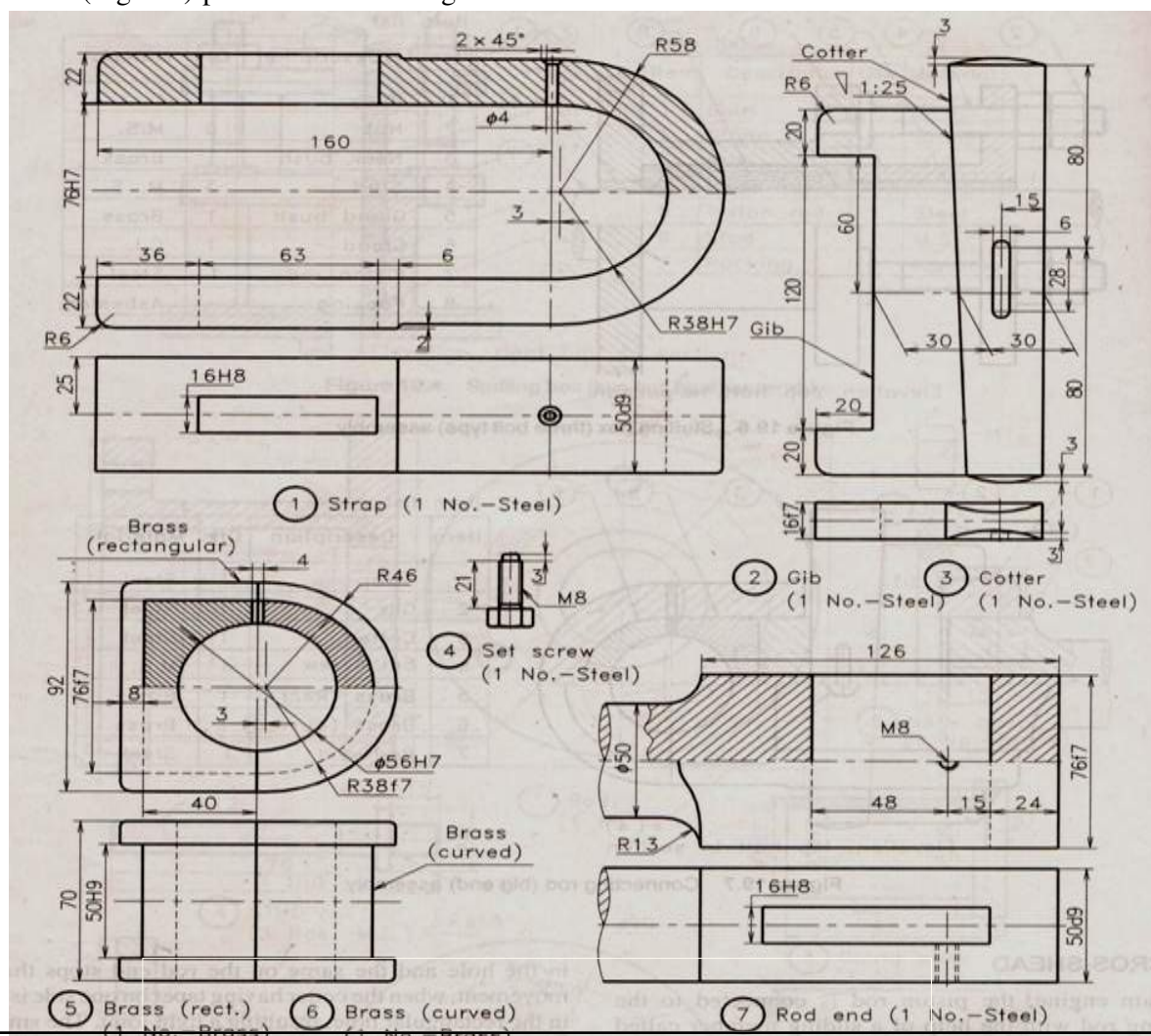
3. **Part-B** is compulsory

## PART- A

1. Sketch the conventional representation of the following
  - i) Materials
  - ii) Springs
  - iii) bearing
2. Draw the assembled view of cotter joint with sleeve, which can join two shafts of 25 mm diameter.
3. Draw the top half sectional view of protected type of flanged coupling for the shaft diameter of 50 mm

**PART- B**

4. Draw the assembled top half sectional front view and top view of the following connecting rod(big end) part as shown in Fig.



1 of 2

Code No: RT22035

**R13****SET - 3**

Item list

Item	Description	Qty.	Material
1	Strap	1	Steel
2	Gib	1	Steel
3	Cotter	1	Steel
4	Set screw	1	M.S.
5	Brass (Rect.)	1	Brass
6	Brass (Curved)	1	Brass
7	Rod end	1	Steel

2 of 2





[www.FirstRanker.com](http://www.FirstRanker.com)

