

CT Inst. of En

Roll No.

Total No. of Pages : 03

Total No. of Questions : 07

B.Tech. (ME-2011 Batch) (Sem.-3rd)

MACHINE DRAWING

Subject Code : BTME-303

Paper ID : [A1140]

Time : 3 Hrs.

Max. Marks : 60

INSTRUCTION TO CANDIDATES :

1. SECTION-A is **COMPULSORY** consisting of **NINE** questions carrying **TWO** marks each.
2. SECTION-B contains **FOUR** questions carrying **FOUR** marks each and students has to attempt any **THREE** questions.
3. SECTION-C contains **TWO** questions carrying **THIRTY** marks each and students has to attempt any **ONE** questions.

SECTION-A

1. Answer briefly :

- (a) What do you mean by machining symbols and their importance?
- (b) Name the meaning of the following symbols :
(i) = (ii) M
- (c) What do you mean by Tolerance? Show it with the help of a sketch.
- (d) Show the removed section with the help of a suitable sketch.
- (e) Show the Aligned system of Dimensioning.
- (f) Give the meaning of the following :
 ϕ 48H7/P6.
- (g) What is meant by Diagonal Pitch in case of rivetted joints?
- (h) Define Right hand and Left hand Threads. Show it by a sketch.
- (i) What are fasteners. List them.

SECTION-B

(Free Hand Sketches Only)

- Sketch the top view and sectional front view of showing the dimensions in terms of 'D'.
- Sketch the Knuckle Threads showing dimensions.
- What is a Gib head key? Show it with the help
- Draw the front view of a square headed Bolt and a washer of suitable dimensions.

SECTION-C

6. Fig. 1 shows the details of a Foot Step Bearing of the assembly and simple plan.

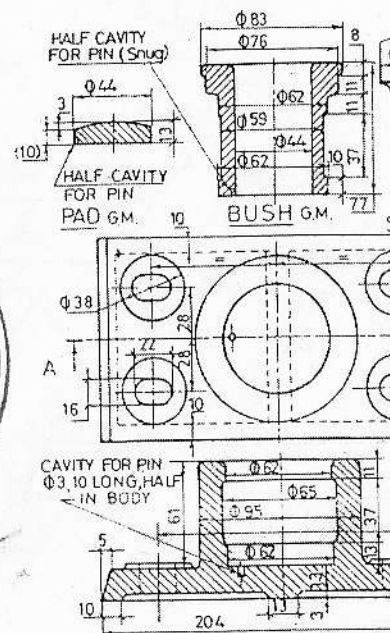


Fig. 1 Details of a Foot Step

7. Fig. 2 shows the details of a Hooke's Joint. Draw the elevation upper half in section of the assembly. Also give the bill of material. (30)

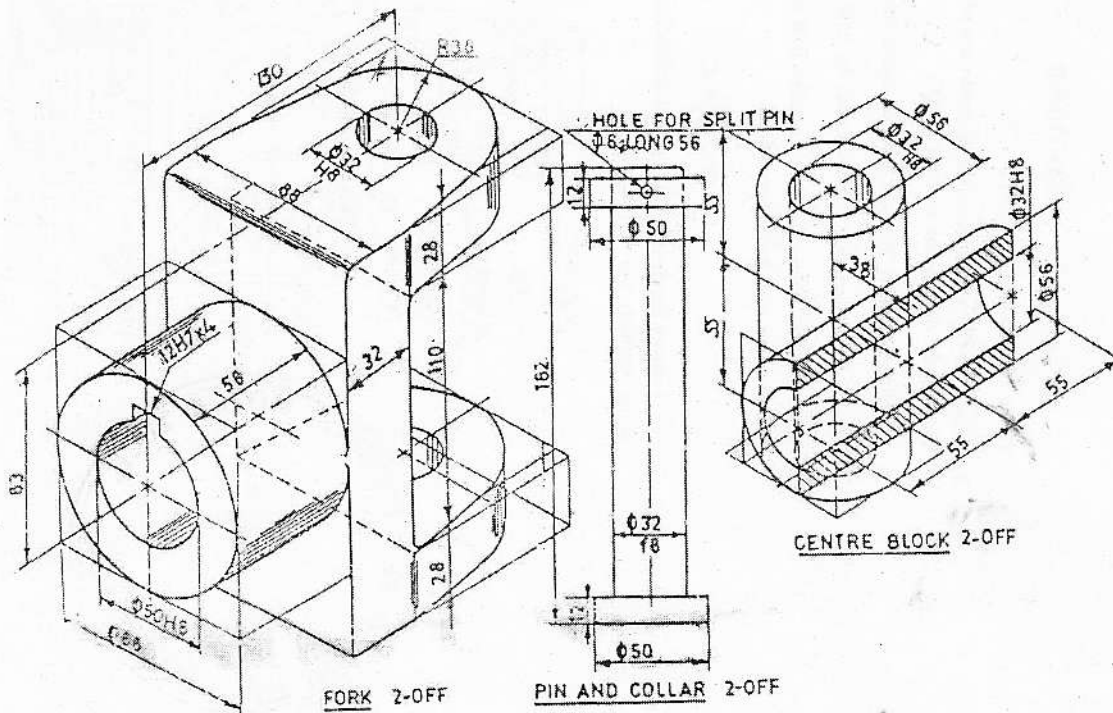


Fig. 2 Details of a Hooke's Joint or Universal Coupling