

Code: 15A03401

R15

B.Tech II Year II Semester (R15) Supplementary Examinations December 2018

MACHINE DRAWING

(Mechanical Engineering)

Time: 4 hours

Max. Marks: 70

All answer should be on the drawing sheet only
Answers on the drawing sheet only will be valued
First angle projections to be adopted

Section – I

Answer any two of the following (2 × 4 = 08 Marks)

- 1 Sketch conventional representation of the following materials:
 - (a) Bronze.
 - (b) Cast iron.
 - (c) Concrete.
 - (d) Wood.
- 2 Sketch the method of dimensioning chamfers and countersunks.
- 3 What is the information generally provided by the title block and what is its maximum length? Show by drawing.

Section – II

Answer any two of the following (2 × 10 = 20 Marks)

- 4 Sketch the following thread profiles for a nominal diameter of 25 mm and pitch 3 mm:
 - (a) BSW thread.
 - (b) Buttnress thread.
 - (c) Square thread.
- 5 Draw sectional front view and top view of double riveted double strap chain butt joint to connect plates of 20 mm thickness.
- 6 Draw two views of the flexible flange coupling to join two shafts of 30 mm diameter.

Section – III

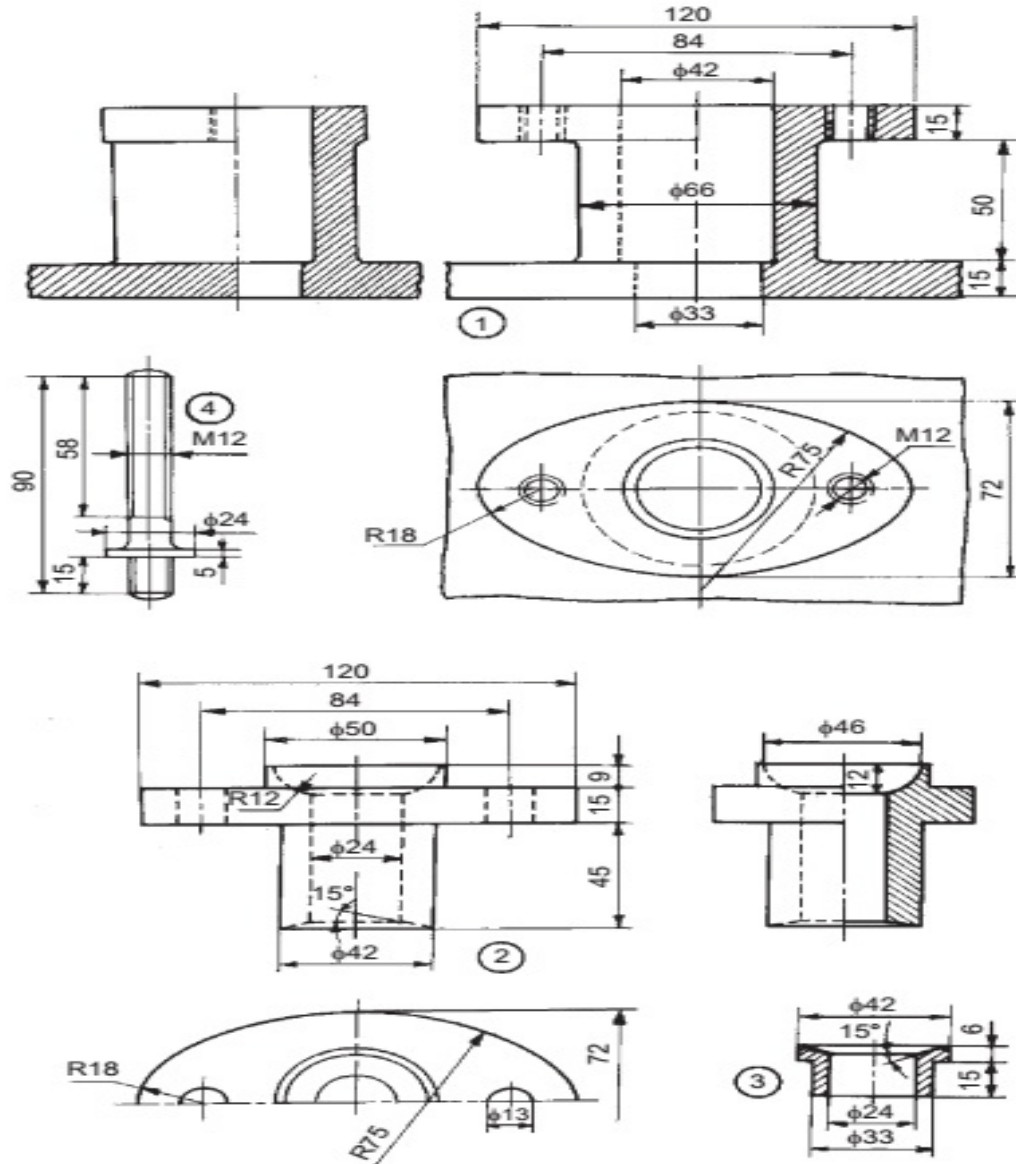
Answer the following (1 × 42 = 42 Marks)

- 7 The details of stuffing box are given in the figure below. Draw the following assembled views:
 - (a) Full sectional front view.
 - (b) Top view.

Contd. in page 2

Code: 15A03401

R15



Parts list

Part No.	Name	Material	Qty
1	Body	CI	1
2	Gland	Brass	1
3	Bush	Brass	1
4	Stud	MS	2
5	Nut, M12	MS	2
