

Code No: RT22035

R13**SET - 1****II B. Tech II Semester Supplementary Examinations, April-2018****MACHINE DRAWING**

(Com. to ME, AME, MM)

Time: 3 hours

Max. Marks: 70

Note: 1. Question Paper consists of two parts (**Part-A** and **Part-B**)2. Answer **TWO** question from **Part-A**3. **Part-B** is compulsory

~~~~~

**PART-A**

1. Sketch the internal and external ISO metric thread profile of nominal size M20 (11M)
2. Draw (i) sectional view from the front and (ii) view from above, of the double riveted, double strap, chain butt joint, to join plates of thickness 10 mm: (11M)
3. Draw (a) sectional view from the front and (b) view from the side of a universal coupling, indicating proportions, to connect two shafts, each of diameter 60 mm. (11M)

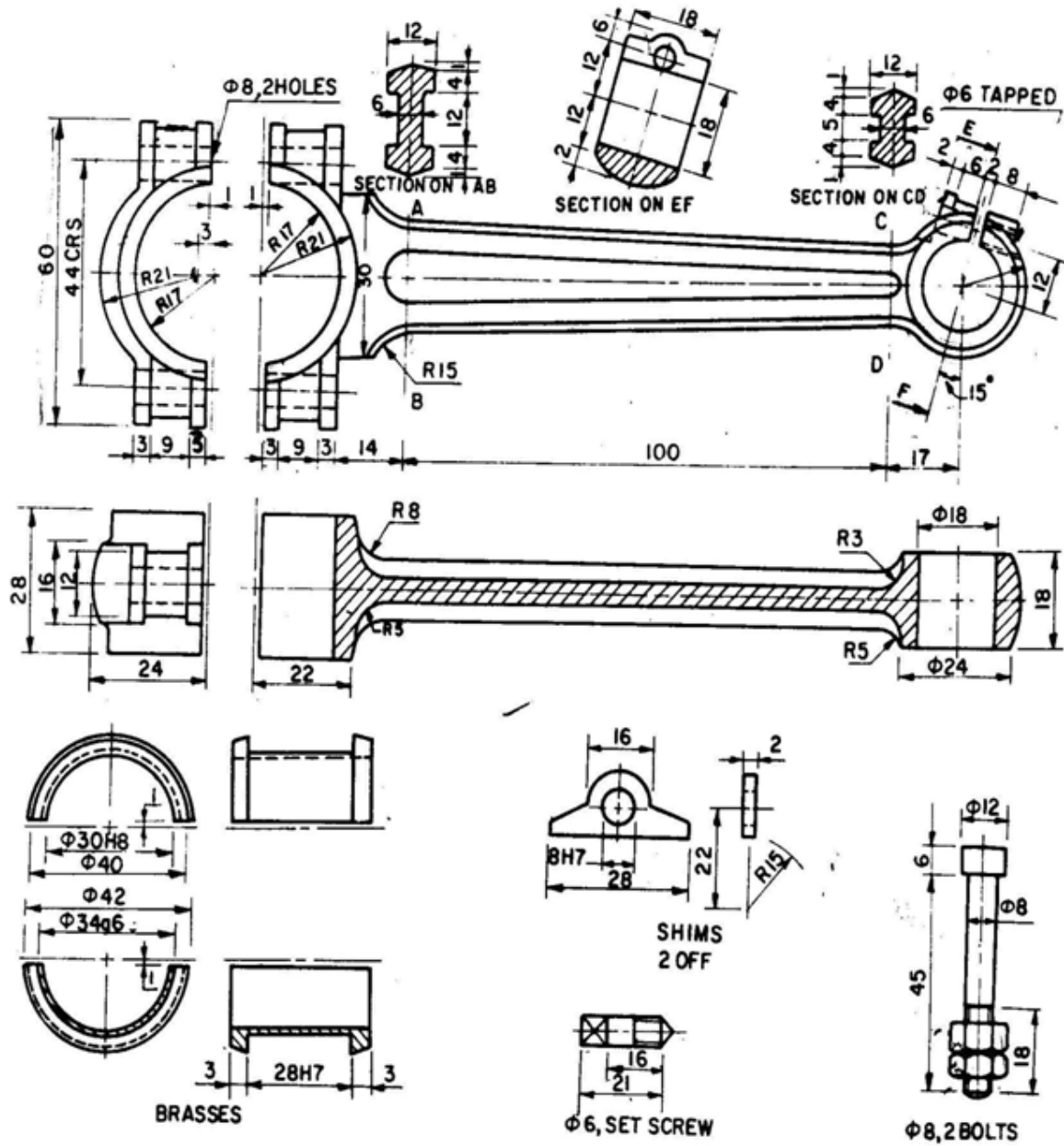
**PART-B**

4. Assemble all parts of the Petrol Engine Connecting rod, shown in Fig. and draw the following views: (i) Half sectional view from the front, (ii) View from above (48M)

Code No: RT22035

**R13**

SET - 1



Connecting Rod for petrol engine