

Code No: RT22035

R13**SET - 1****II B. Tech II Semester Supplementary Examinations, November-2018****MACHINE DRAWING**

(Com. to ME, AME, MM)

Time: 3 hours

Max. Marks: 70

- Note: 1. Question Paper consists of two parts (**Part-A** and **Part-B**)
2. Answer **TWO** question from **Part-A**
3. **Part-B** is compulsory
- ~~~~~

PART -A

1. Sketch the following : (11M)
a) BSW thread b) Buttren thread c) Internal threads d) Compression spring
2. Draw the sectional front view and side view of a cotter joint with sleeve used to connect two rods of 40 mm diameter each. (11M)
3. Draw (a) sectional view from the front and (b) view from above, of single riveted, double strap butt joint of thickness 15 mm: (11M)

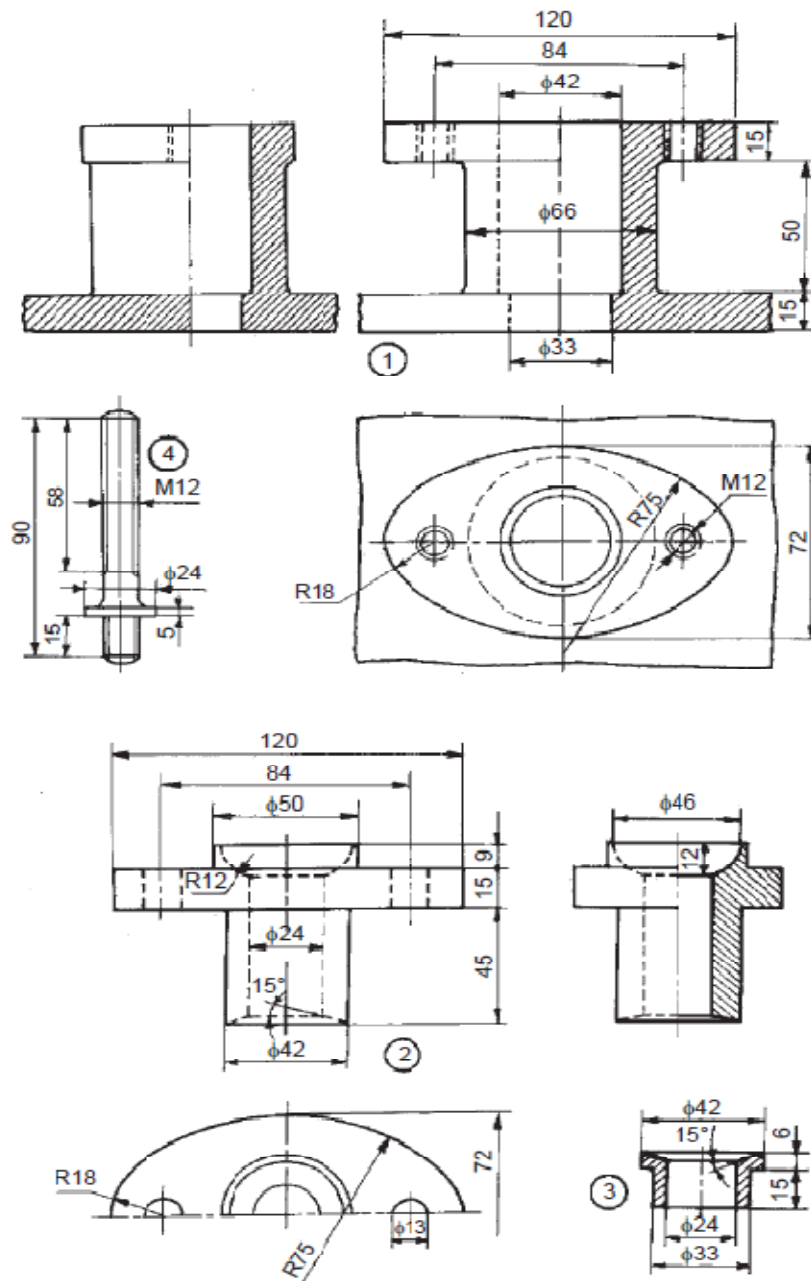
PART -B

4. The part drawings of Stuffing box are shown in Fig. Assemble the parts and draw, (48M)
(i) Sectional view from the front and (ii) view from above.

Code No: RT22035

R13

SET - 1



Parts list

Part No.	Name	Matl	Qty
1	Body	CI	1
2	Gland	Brass	1
3	Bush	Brass	1
4	Stud	MS	2
5	Nut, M12	MS	2

Stuffing box