

**Total No. of Pages : 03**

**Total No. of Questions : 03**

## B. Architecture (Sem.-2)

# ARCHITECTURAL DRAWING-II

**Subject Code : AR-126**

**Paper ID : [A0909]**

**Time : 04 Hrs.**

**Max. Marks : 70**

**INSTRUCTIONS TO CANDIDATES :**

1. Attempt ALL the questions.
2. Retain all the construction lines.
3. Assume the missing data if any and mention the same.
4. All dimensions are in centimeters.

## UNIT-I

Q1. Refer figure 1 (not to scale) and draw a bird's eye (two point) perspective. (20)

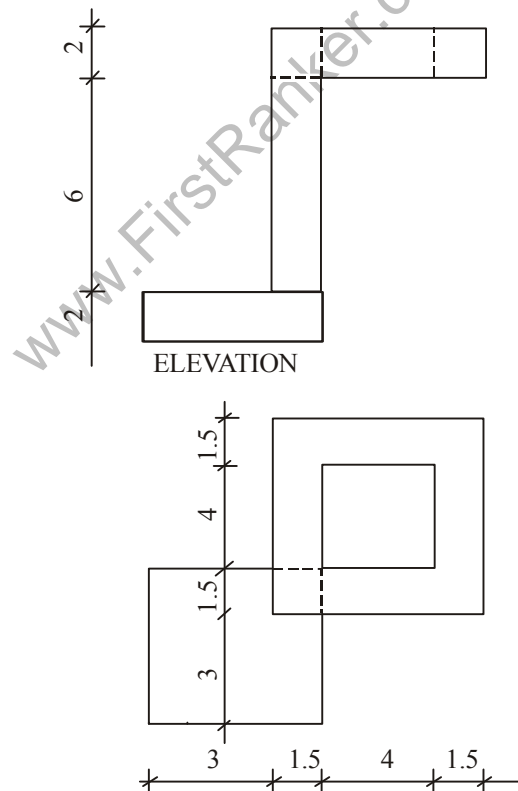


Figure 1 (Not to Scale)

Q2. Refer figure 2 (not to scale) and draw a bird's eye twopoint perspective. (20)

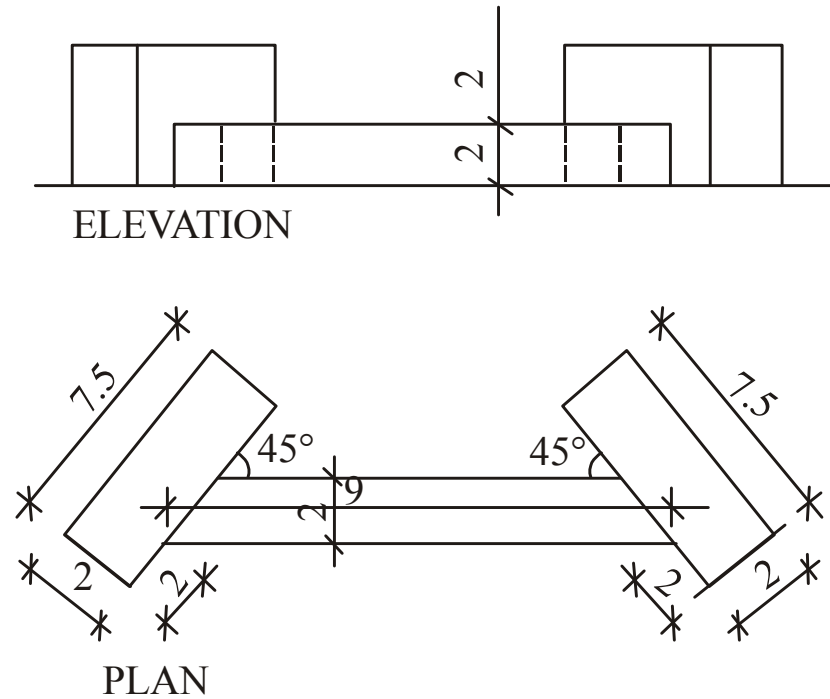


Figure 2 Plan (Not to Scale)

## UNIT-II

Q3. Show sciography (shade and shadow) in plan and elevation on the sheet in question paper supplied to you and attach it with your main answer sheet. (30)

Roll No.....

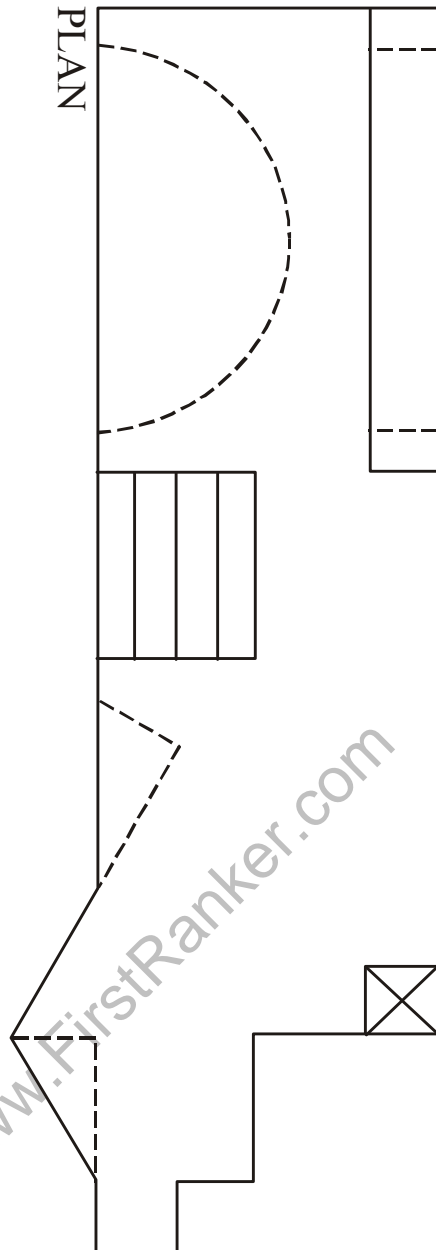
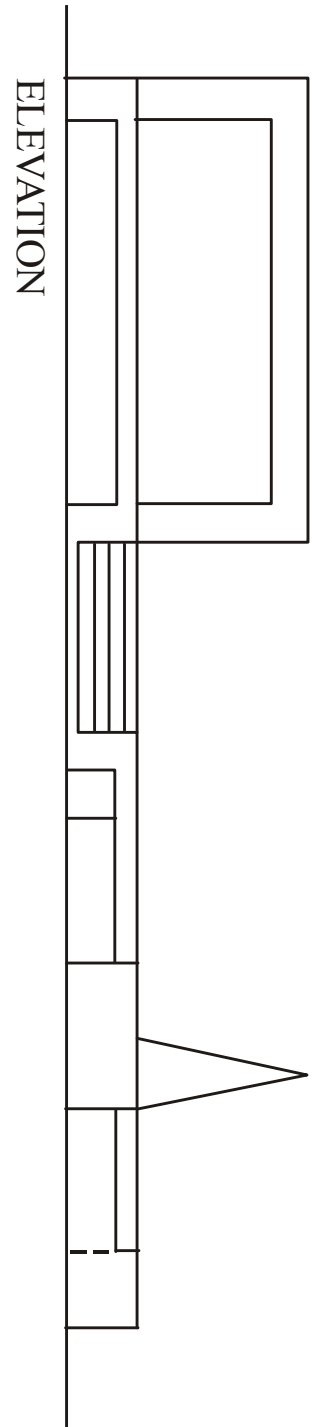


Figure - 3 (Show sciography in Plan and Elevation and attach the sheet to your main answer sheet)