

Roll No.

| | | | | | | | | | | | | | | | | | | | |
|--|--|--|--|--|--|--|--|--|--|--|--|--|--|--|--|--|--|--|--|
| | | | | | | | | | | | | | | | | | | | |
|--|--|--|--|--|--|--|--|--|--|--|--|--|--|--|--|--|--|--|--|

Total No. of Pages : 04

Total No. of Questions : 04

B. Architecture (2012 & Onwards) (Sem.-2)

ARCHITECTURAL DRAWING – II

Subject Code : BACH-203

Paper ID : [A1235]

Time : 04 Hrs.

Max. Marks : 50

INSTRUCTIONS TO CANDIDATES :

1. Attempt any ONE question from each section.
2. TWO Questions are to be attempted in total.
3. Assume any missing data and mention the same.
4. Do not erase the construction lines.
5. Credit will be given for neat drafting.
6. The figures attached are not to scale.
7. All the dimensions given are in millimeters.

UNIT-I

- Q1. Draw the axonometric view of the object whose plan and elevation are given in Figure-1 attached. (20)

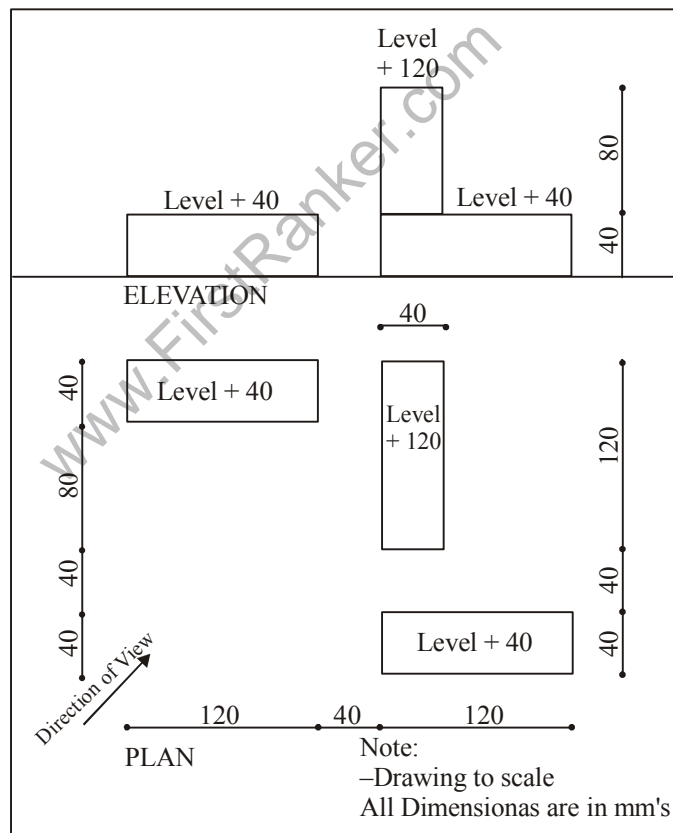


Fig. 1

Q2. Draw the axonometric view of the object whose plan and elevation are given in Figure-2 attached. (20)

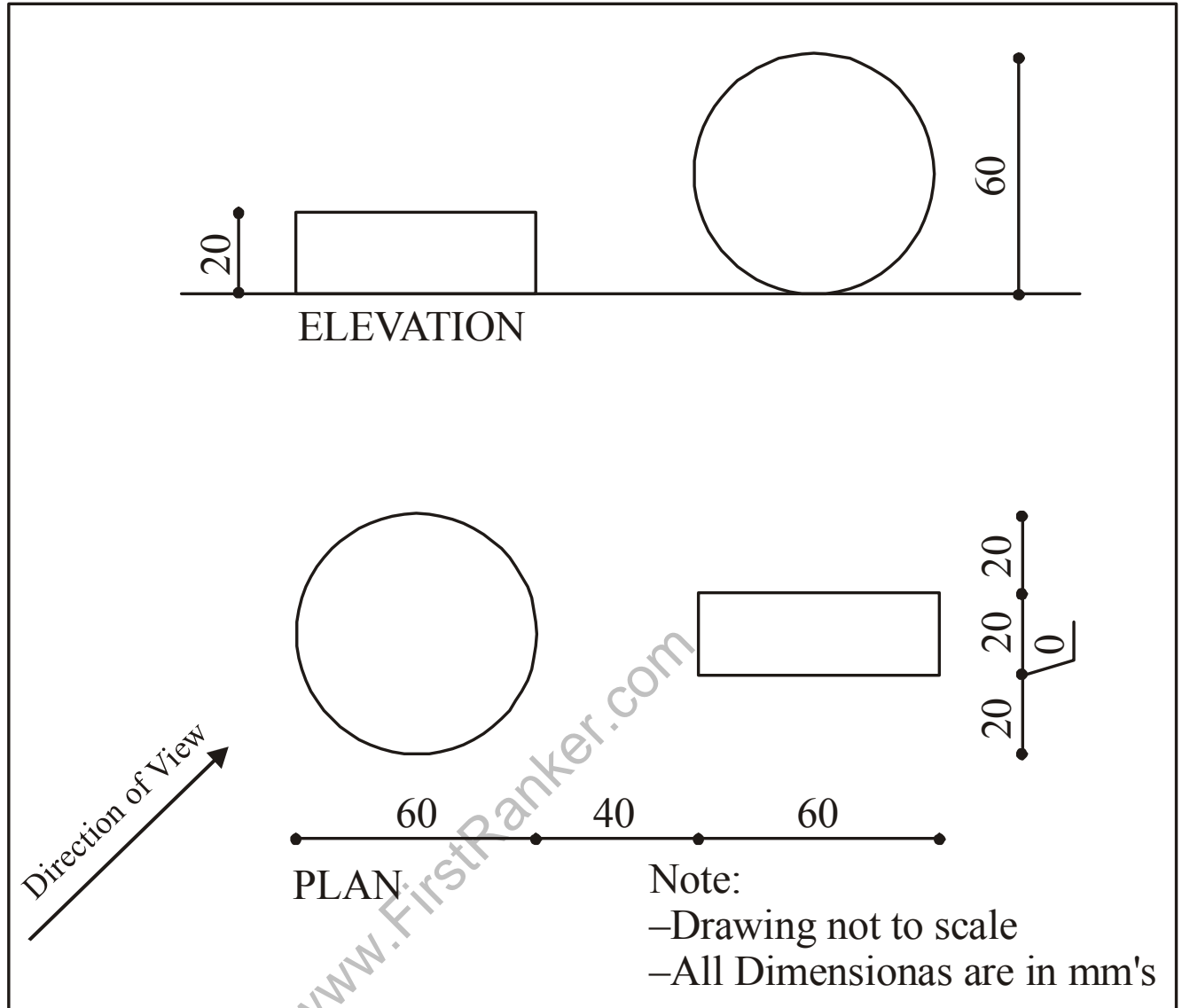
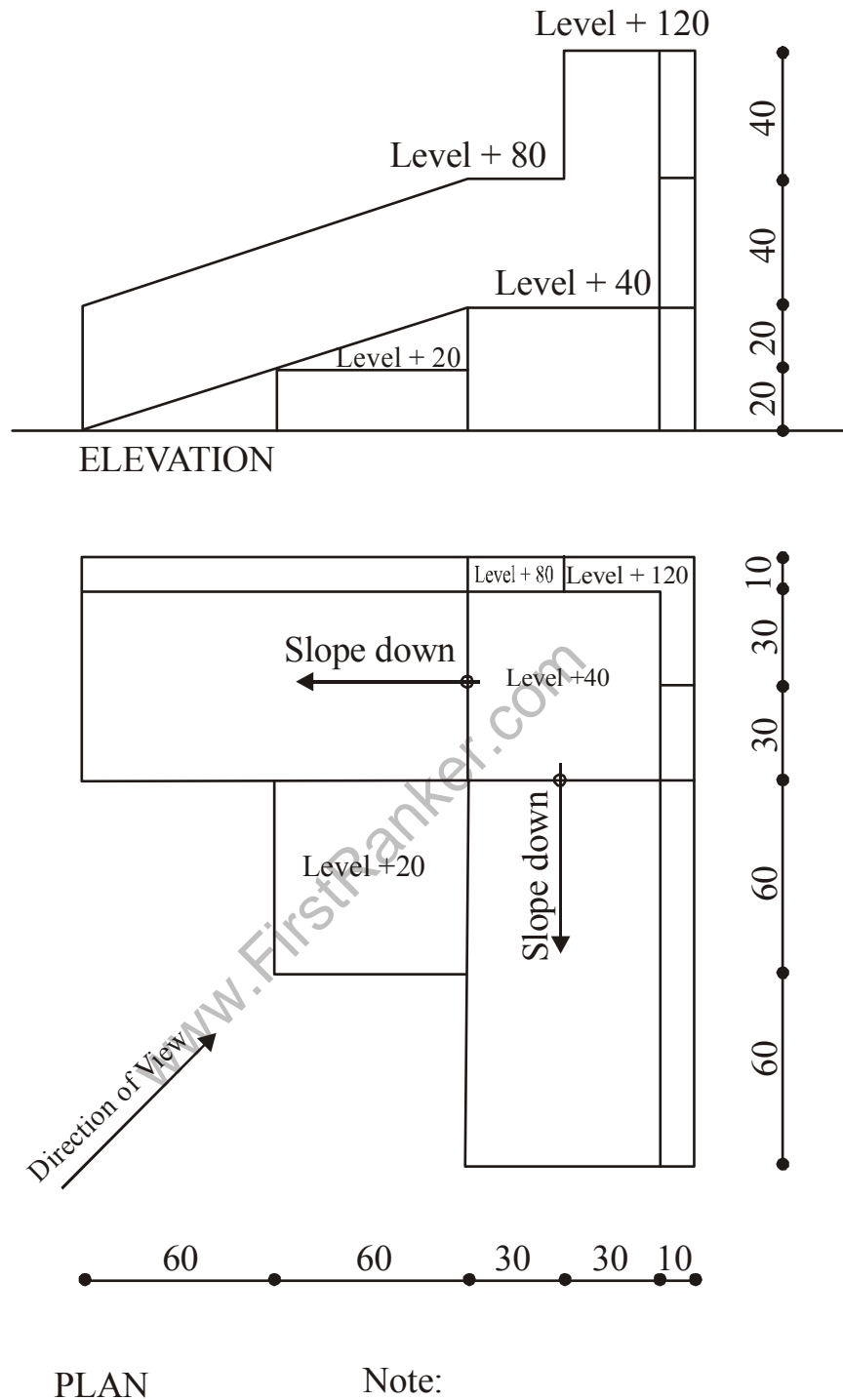


Fig.2

UNIT-II

- Q3. Draw a two point perspective of the object whose plan and elevation are given in Figure-3 attached. The students are required to determine the position of the picture plane, station point, and the eye level themselves. (30)



Note:

- Drawing not to scale
- All Dimensionas are in mm's

Fig. 3

- Q4. Draw a one point perspective of the object whose plan and elevation are given in Figure-4 attached. The students are required to determine the position of the picture plane, station point, and the eyes level themselves. (30)

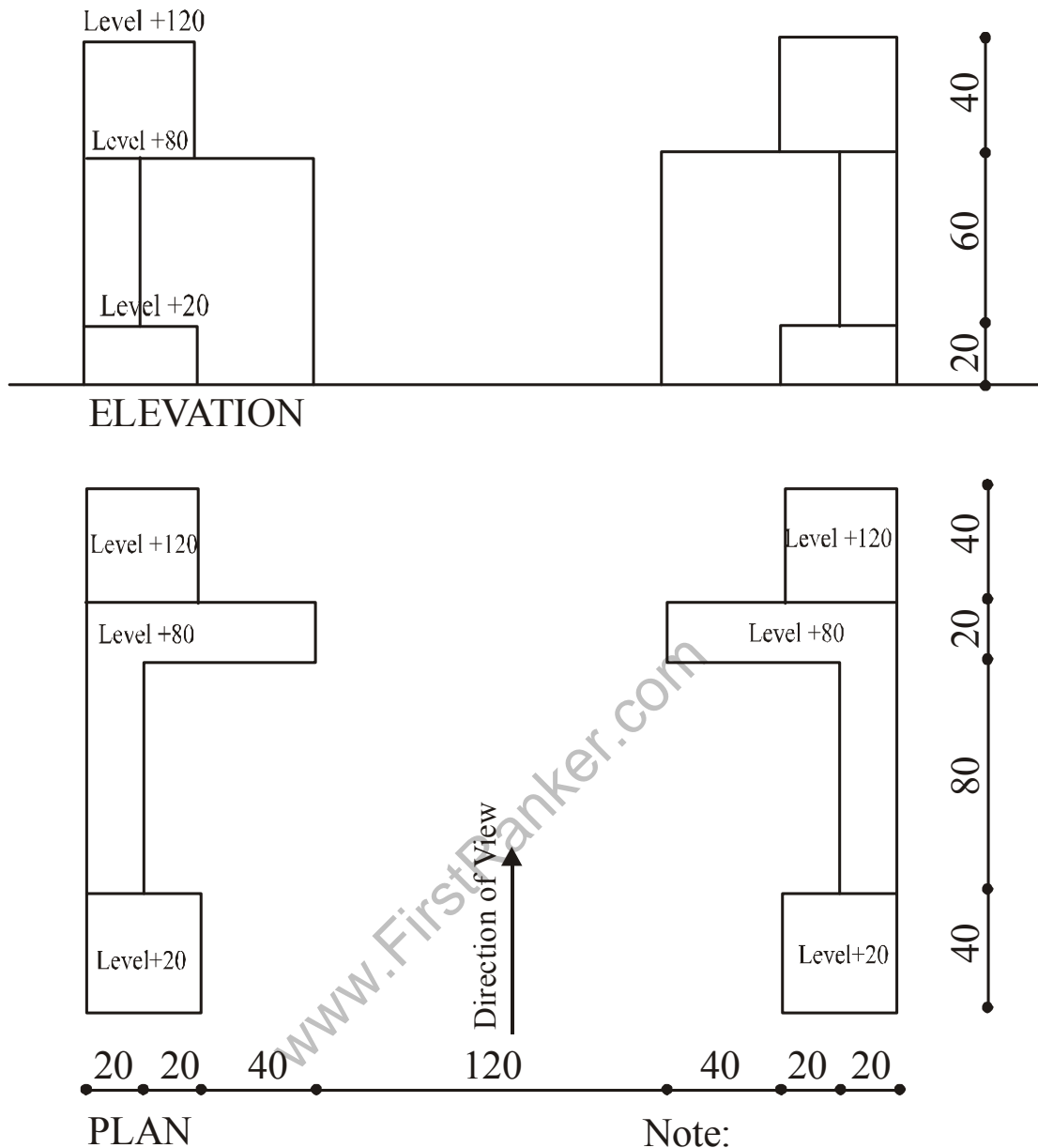


Fig.4