

Total No. of Pages : 03

Total No. of Questions : 07

B. Architecture (2012 & Onwards) (Sem.-9)
BUILDING CONSTRUCTION & MATERIALS-VIII

Subject Code : BACH-902

Paper ID : [74096]

Time : 4 Hrs.

Max. Marks : 75

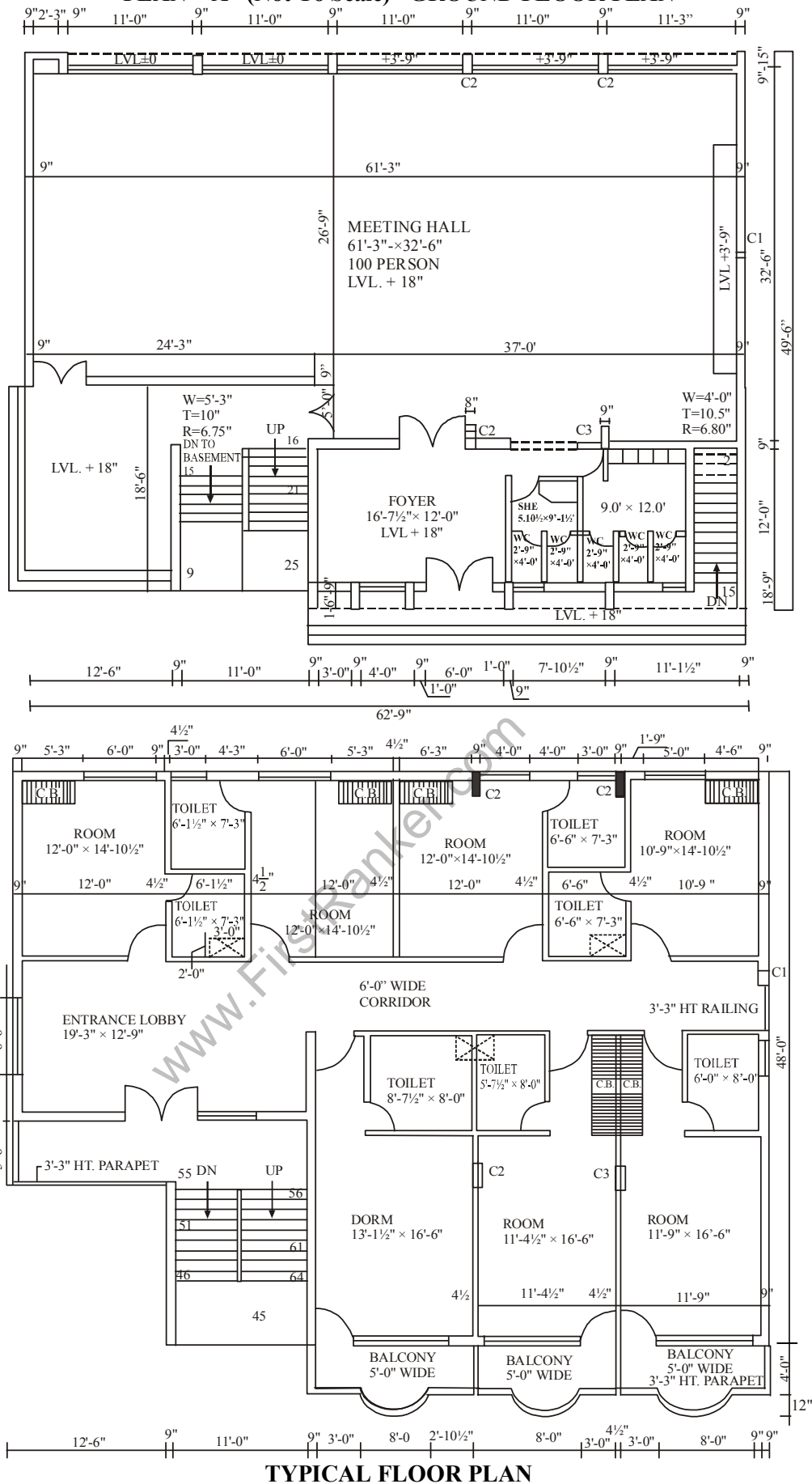
INSTRUCTIONS TO CANDIDATES :

1. Attempt THREE questions In ALL with at least ONE question from EACH UNIT.
2. Assume the missing data if any and mention that along with answer.

UNIT-I

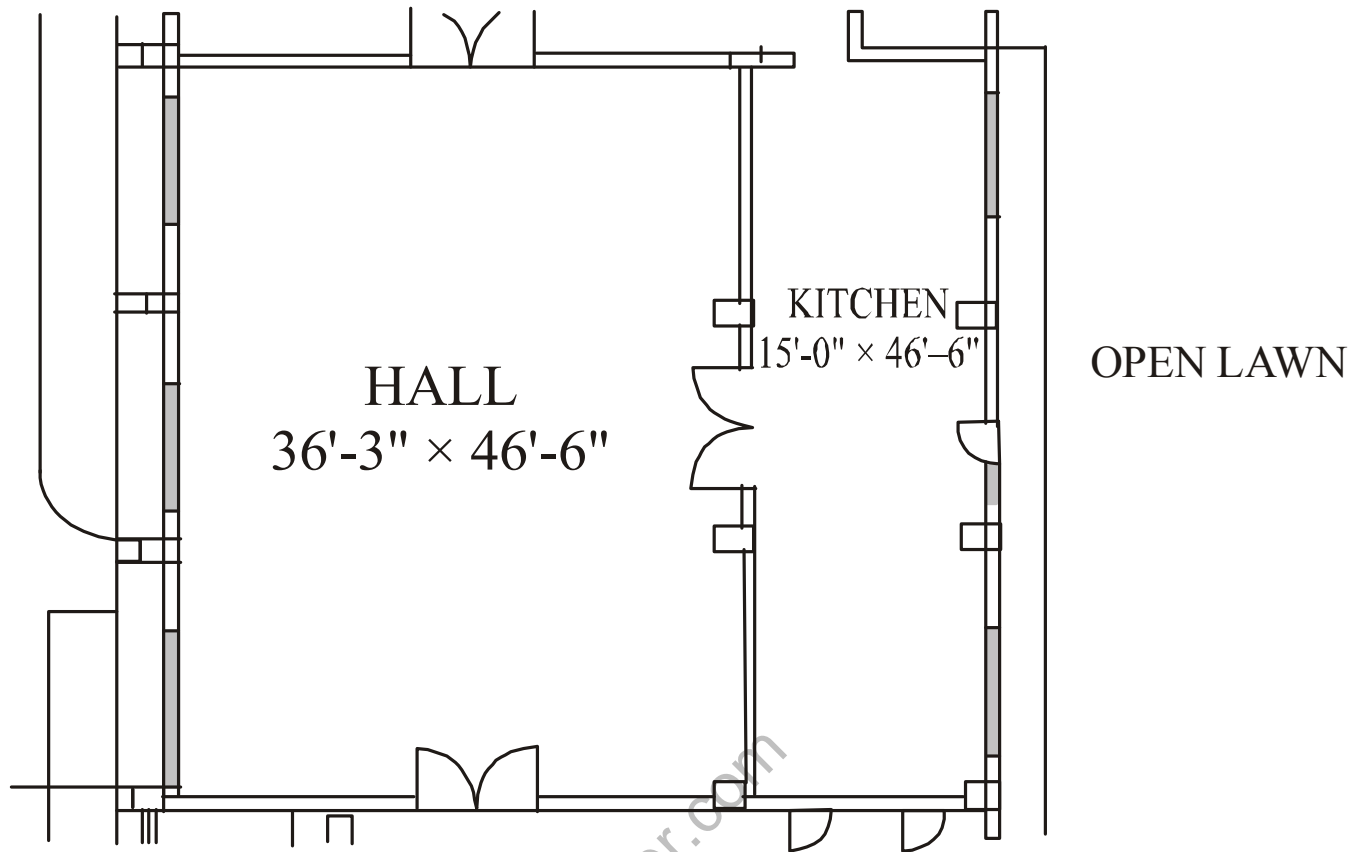
Q1 Draw the architectural working drawing for the enclosed plan “A” as per following

- a) Foundation plan showing typical column and wall foundation detail (12.5)
- b) Ground Floor Plan and typical Floor Plan (12.5)



- Q2 Draw the kitchen details of PLAN "B" showing fixtures, counters and typical details of different levels show in plans, elevation and sections (25)

PLAN – B (Not To Scale)



- Q3 What is the difference between pre stressing and post tensioning? Explain where the process of post tensioning is applied in construction with examples. (10, 15)

UNIT-II

- Q4 Explain the basic principles involved in modular construction. Draw sketches of various structural modules used in modular construction (10, 15)
- Q5 What are the different materials used for external cladding. Draw a sketch showing detail of fixing of a Composite panel for external cladding. (5, 20)
- Q6 What are the principles followed for constructing curtain walls. Draw a sketch showing an external glass curtain wall for a high rise building. (5, 20)
- Q7 Describe different types of escalators. Draw a proportionate sketch showing details of escalator for a clear height of 5meters. (5, 20)