

Code No: R31012

**R10**

**Set No: 1**

III B.Tech. I Semester Supplementary Examinations, May - 2013

**BUILDING PLANNING & DRAWING**

(Civil Engineering)

**Time: 3 Hours**

**Max Marks: 75**

Answer any **THREE** questions from Part-A ( 3 x 15 Marks)

Answer any **one** question from Part-B (30 Marks)

\*\*\*\*\*

**PART-A**

1. a) Explain the provisions for safety of works against hazards or accidents.  
b) Explain the objectives of building byelaws.
2. a) Give the standard dimensions for the following rooms of a residential building  
(i) Verandah  
(ii) Bed room  
(iii) Sick room  
b) What are the factors to be considered by planner prior to planning of a residential building Explain one of them in detail.
3. a) What are the factors to be considered in the design of a bank building?  
b) Explain the principle of planning a hospital.
4. a) What are the difference between bar charts and milestone charts?  
b) Write short notes on following.  
(i) Slack  
(ii) Total float  
(iii) Latest allowable time  
(iv) Critical path
5. a) What are the classifications according to building bye-laws. and explain?  
b) Explain the importance of height of buildings according to building bye-laws?

**PART-B**

6. a) Draw the neat sketch of King post truss and North light type truss.  
b) Draw the plan and components of the given line diagram (Fig. 1). Assume necessary suitable data?

OR

7. The residential building with the dimensions is given in Fig. 2. Draw the plan and elevation. Assume necessary suitable data.

\*\*\*\*\*

Code No: R31012

**R10**

**Set No: 1**

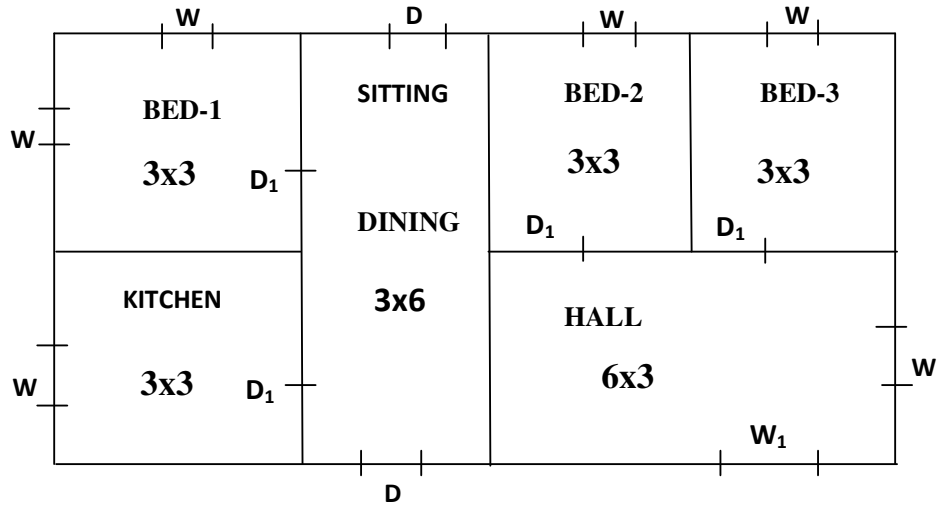
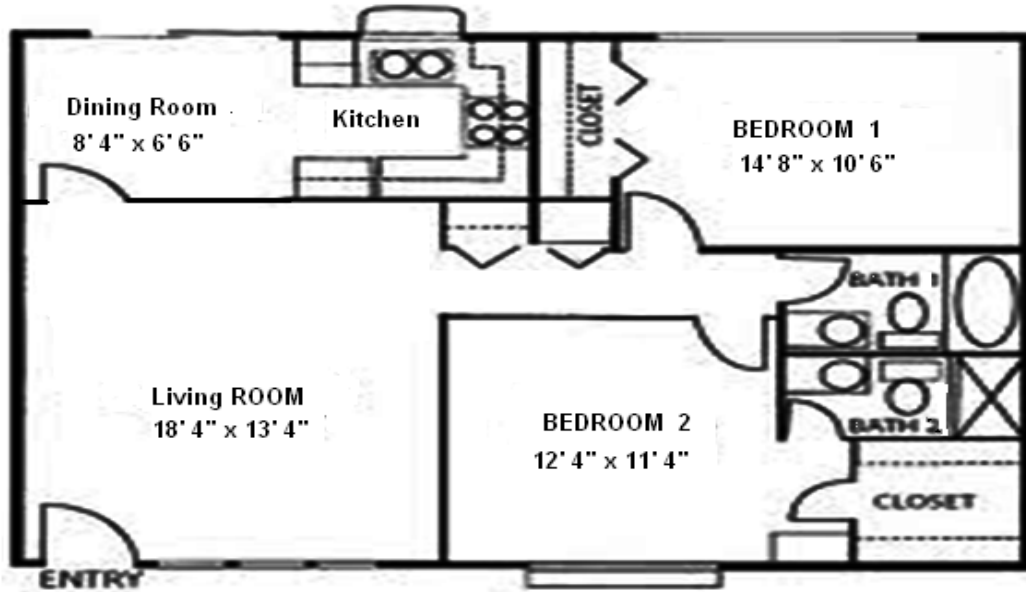


Fig. 1

**REFERENCE:-**

D-1000X2000 mm; D<sub>1</sub>-900X2000 mm; W-900X1200 mm; W<sub>1</sub>-2000X1000 mm; V-800X300 mm; All dimensions of rooms are e in m

OR



Two Bedroom, Two Bath

Fig. 2

D - 1000 X 2000 mm; D<sub>1</sub> - 700 X 2000 mm (bath room Doors); W - 2000 X 1000 mm; V - 800 X 300 mm

\*\*\*\*\*

2 of 2

Code No: R31012

**R10**

**Set No: 2**

III B.Tech. I Semester Supplementary Examinations, May - 2013

**BUILDING PLANNING & DRAWING**

(Civil Engineering)

**Time: 3 Hours**

**Max Marks: 75**

Answer any **THREE** questions from Part-A ( 3 x 15 Marks)

Answer any **one** question from Part-B (30 Marks)

\*\*\*\*\*

**PART-A**

1. a) What are the objectives of building bye-laws?  
b) Explain the provisions for safety of works against hazards or accidents.
2. What are the requirements for the following rooms of a residential building  
(i) Dining room                      (ii) Drawing room                      (iii) Kitchen
3. a) Explain the site selection for school building.  
b) Discuss briefly the minimum standards in office building.
4. a) What are the importance of CPM network planning in project management.  
b) What is scheduling? Explain.
5. a) Write the importance and necessity in planning of hotels and motels?  
b) What do you understand about the Floor space index (FSA)?

**PART-B**

6. a) Draw the neat sketch of King post truss and north light truss.  
b) Draw the plan and components of the given line diagram (Fig. 1). Assume necessary any Suitable Data?

OR

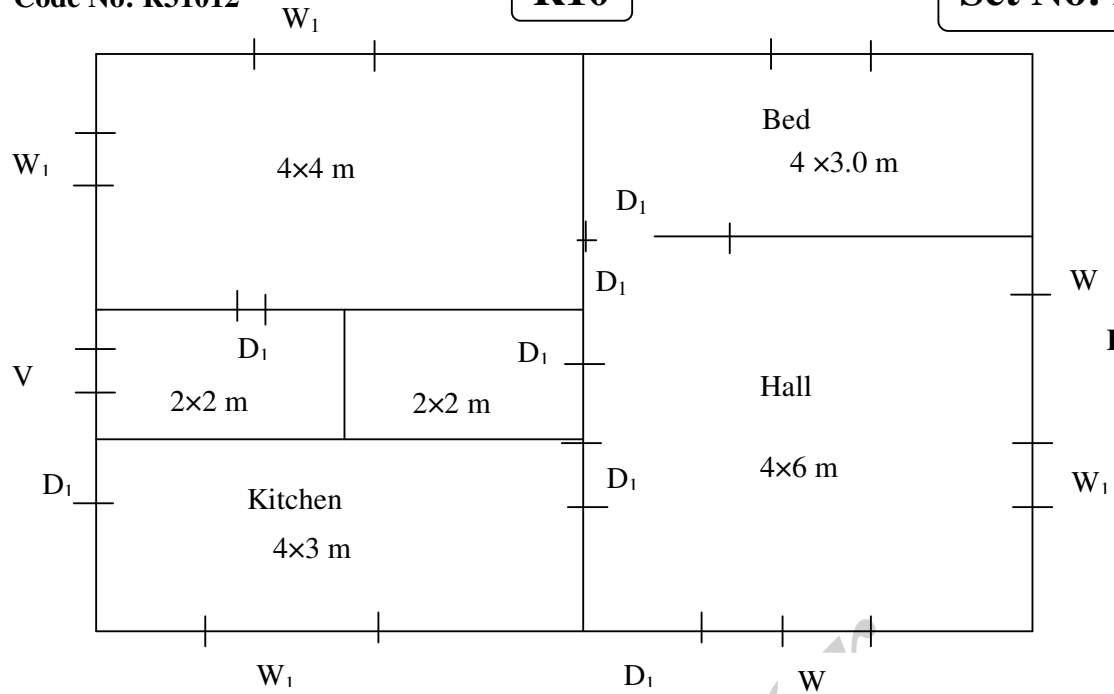
7. Draw the Plan and Elevation of the residential building with the following dimensions (Fig. 2). Assume necessary suitable data with minimum dimensions as BIS

\*\*\*\*\*

Code No: R31012

**R10**

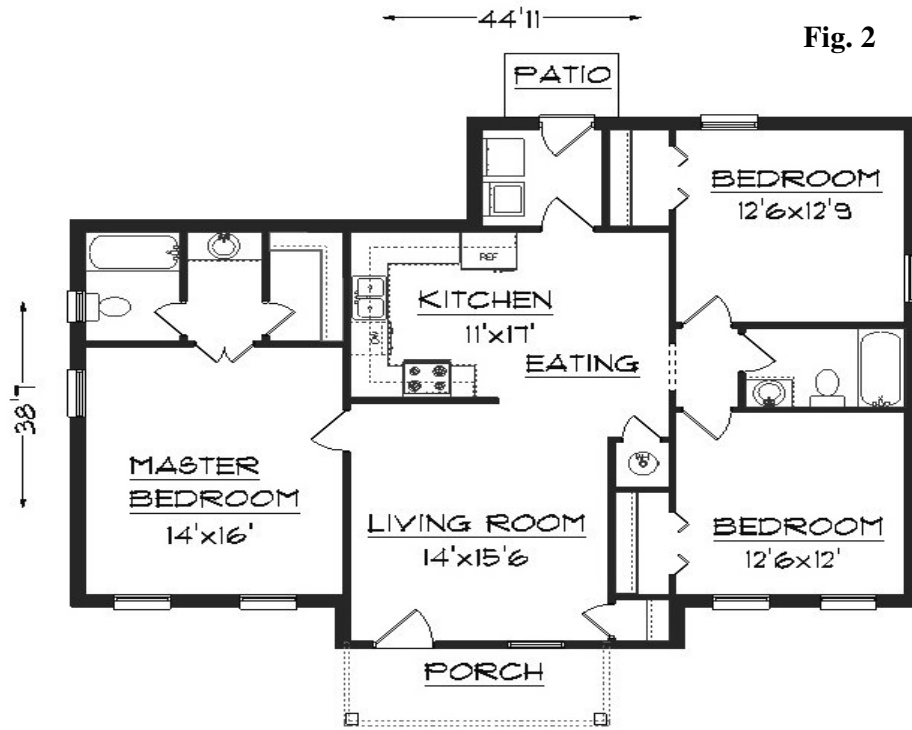
**Set No: 2**



**Fig. 1**

D - 1000 X 2000 mm; D1 - 900 X 2000 mm; W - 900 X 1200 mm; W1 - 2000 X 1000 mm;  
V - 800 X 300 mm

OR



**Fig. 2**

D - 1000 X 2000 mm; D1 - 900 X 2000 mm; W - 900 X 1200 mm; W1 - 2000 X 1000 mm;  
V - 800 X 300 mm

\*\*\*\*\*

2 of 2

Code No: R31012

**R10**

**Set No: 3**

III B.Tech. I Semester Supplementary Examinations, May - 2013

**BUILDING PLANNING & DRAWING**

(Civil Engineering)

**Time: 3 Hours**

**Max Marks: 75**

Answer any **THREE** questions from Part-A ( 3 x 15 Marks)

Answer any **one** question from Part-B (30 Marks)

\*\*\*\*\*

**PART-A**

1. a) What are the minimum standard dimensions of building elements?  
b) Write the applicability of the BYE-LAWS
2. What are the usual requirements of a residential building?
3. A mandal revenue office is to be built at a site of 70m x 50m. The shorter dimension is along E-W, facing of the road. Draw a line drawing of the building to accommodate
  - (i) Officer's room
  - (ii) Two office rooms
  - (iii) One veranda and
  - (iv) One store roomBriefly explain the principles of your planning.
4. a) Write short notes on following
  - (i) Slack
  - (ii) Total float
  - (iii) Latest allowable time
  - (iv) Critical pathb) What is the importance of PERT network planning in project management?
5. a) Write the importance and necessity in planning of buildings for recreation.  
b) What do you understand about the Floor space index (FSI)?

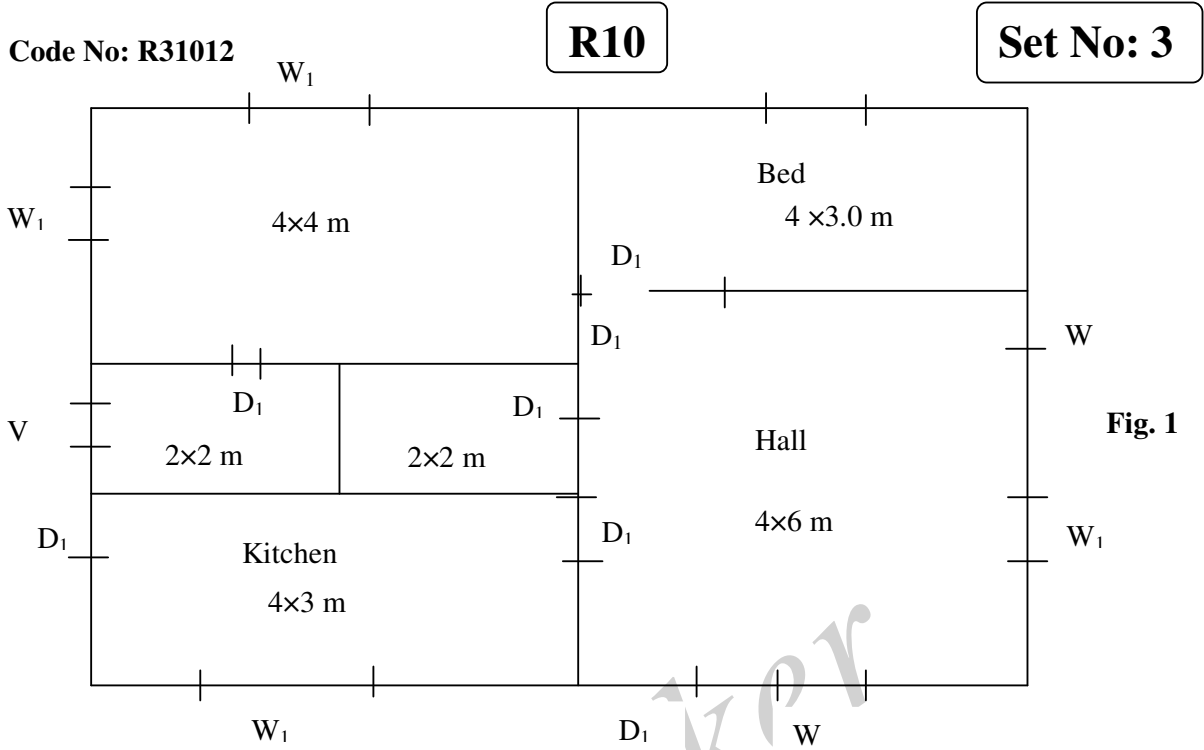
**PART-B**

6. a) Draw the sign conventions of R.C.C, COPPER ALLOY, BRICK MASONRY and SAND FILLING, and TIMBER various sections?  
b) Draw the plan and elevation of the given line diagram (Fig. 1). Assume any necessary Suitable Data?

Or

7. Draw the Plan and Elevation of the residential building with the following dimensions (Fig. 2). Assume necessary suitable data with minimum dimensions as BIS

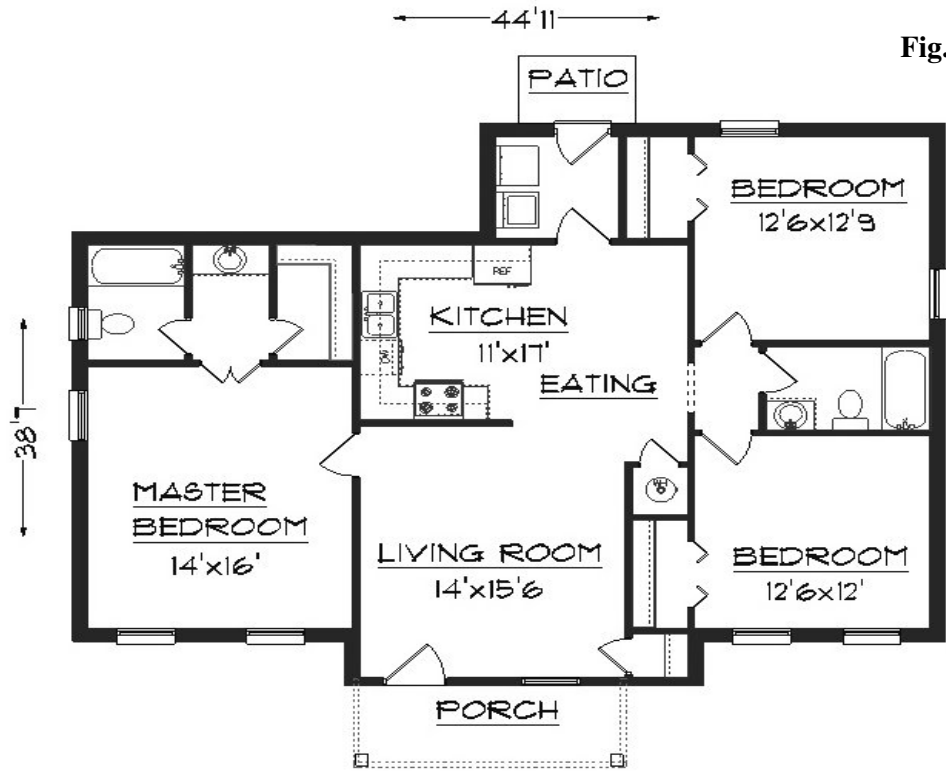
\*\*\*\*\*



**Fig. 1**

D - 1000 X 2000 mm; D1 - 900 X 2000 mm; W - 900 X 1200 mm; W1 - 2000 X 1000 mm; V - 800 X 300 mm

OR



**Fig. 2**

D - 1000 X 2000 mm; D1 - 900 X 2000 mm; W - 900 X 1200 mm; W1 - 2000 X 1000 mm; V - 800 X 300 mm

\*\*\*\*\*

Code No: R31012

R10

Set No: 4

III B.Tech. I Semester Supplementary Examinations, May - 2013

**BUILDING PLANNING & DRAWING**

(Civil Engineering)

**Time: 3 Hours**

**Max Marks: 75**

Answer any THREE questions from Part-A ( 3 x 15 Marks)

Answer any **one** question from Part-B (30 Marks)

\*\*\*\*\*

**PART-A**

1. a) What is the difference between floor area and carpet area? Explain.  
b) What are the requirements for green belt and landscaping?
2. a) What are the factors to be considered by planner prior to planning of a residential building? Explain one of them in detail.  
b) Give the standard dimensions for the following rooms of a residential building  
(i)Veranda                      (ii)Bed room                      (iii)Sick room
3. a) Discuss in detail about the planning of library building?  
b) Explain the site selection for school building?
4. What do you understand about the planning of construction projects? and explain clearly about all the factors involved in the project?
5. a) Write is the importance and necessity in planning of buildings for recreation?  
b) What is the importance of CPM network planning in project management?

**PART-B**

6. a) Draw the neat sketch of Queen post truss and north light truss.  
b) Draw the plan and components of the given line diagram (Fig. 1). Assume suitable data ?
7. Draw the Plan and Elevation of the residential building with the following dimensions (Fig. 2). Assume necessary suitable data with minimum dimensions as BIS

\*\*\*\*\*

Code No: R31012

**R10**

**Set No: 4**

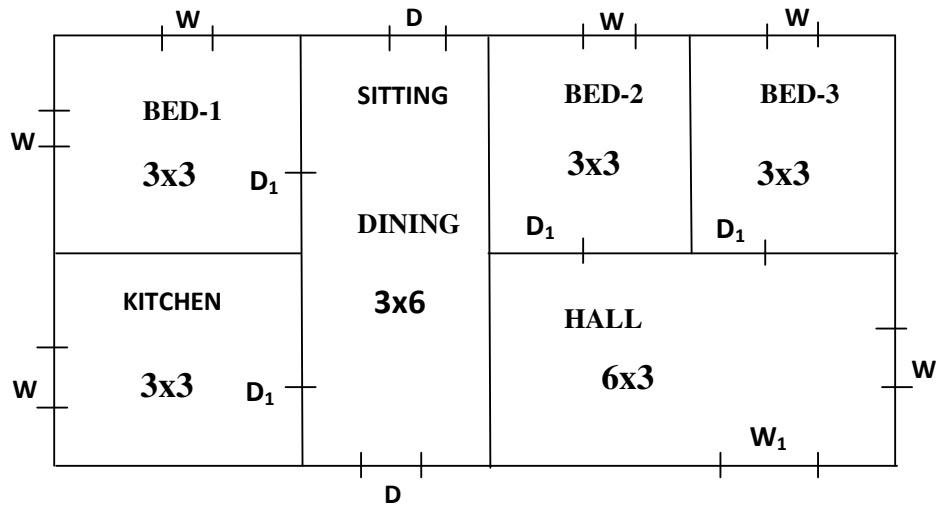
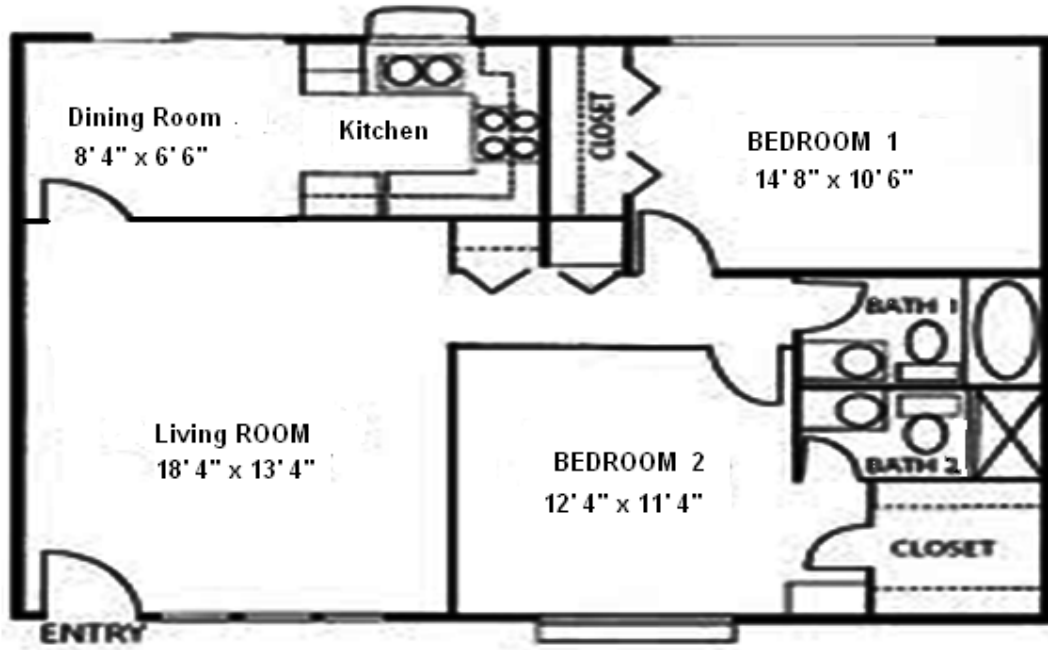


Fig. 1

**REFERENCE:-**

D-1000X2000 mm; D<sub>1</sub>-900X2000 mm; W-900X1200 mm; W<sub>1</sub>-2000X1000 mm; V-800X300 mm; All dimensions of rooms are e in m

OR



**Two Bedroom, Two Bath**

Fig. 2

D - 1000 X 2000 mm; D<sub>1</sub> - 700 X 2000 mm (bath room Doors); W - 2000 X 1000 mm; V - 800 X 300 mm

\*\*\*\*\*